

**NOTES:**

- 1) HP = HORIZONTAL PLANE
- 2) ANNOTATED HEIGHTS INDICATE THE LOWEST CRITICAL SURFACE ELEVATION OF THE PANS-OPS PROTECTION SURFACE IN METRES (AHD)
- 3) CONTOUR INTERVALS 10m
- 4) GRID REFERENCE WGS84
- 5) AIRSPACE PROTECTION SURFACES ARE NOT SHOWN FOR THE OTHER AIRPORTS DEPICTED ON THIS CHART. FOR MORE DETAILS CONTACT AIRSERVICES AUSTRALIA OR THE DEPARTMENT OF DEFENCE
- 6) REFER TO THE REFERENCE DRAWING NOTED FOR INNER CONTOUR DETAIL

**LEGEND:**

- PRECISION APPROACH
- NON-PRECISION APPROACH
- MISSED APPROACH
- STANDARD ARRIVAL
- DEPARTURE
- CIRCLING
- MSA
- XX km- DISTANCE FROM AERODROME REFERENCE POINT (ARP)
- 50m CONTOURS

0 10 20 30km  
SCALE 1:500,000 ON A3

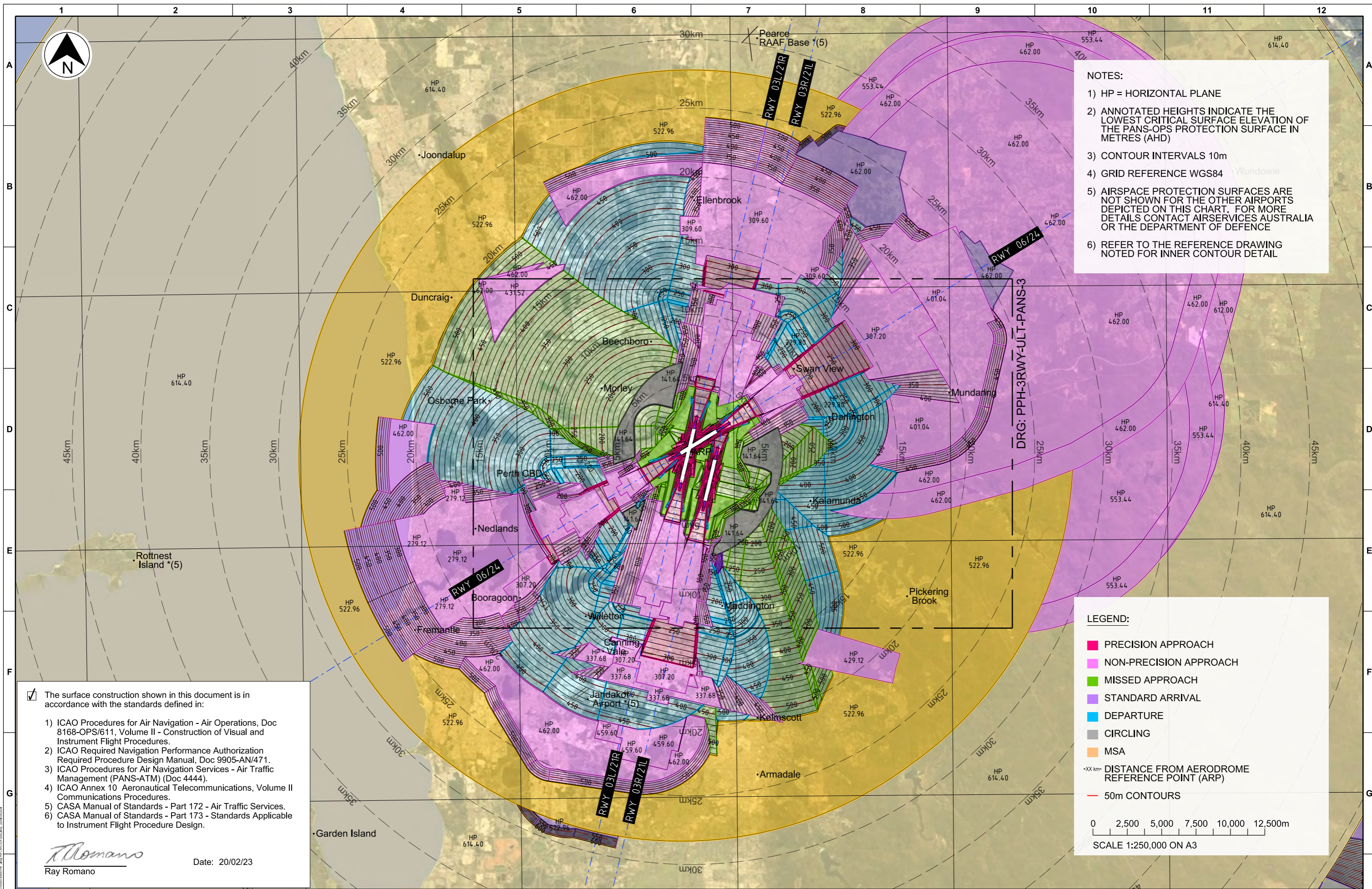
The surface construction shown in this document is in accordance with the standards defined in:

- 1) ICAO Procedures for Air Navigation - Air Operations, Doc 8168-OPS/611, Volume II - Construction of Visual and Instrument Flight Procedures.
- 2) ICAO Required Navigation Performance Authorization Required Procedure Design Manual, Doc 9905-AN/471.
- 3) ICAO Procedures for Air Navigation Services - Air Traffic Management (PANS-ATM) (Doc 4444).
- 4) ICAO Annex 10 Aeronautical Telecommunications, Volume II Communications Procedures.
- 5) CASA Manual of Standards - Part 172 - Air Traffic Services.
- 6) CASA Manual of Standards - Part 173 - Standards Applicable to Instrument Flight Procedure Design.

*Ray Romano*  
Ray Romano  
Date: 20/02/23

REV	DATE	DESIGN	CHKD	APPR	AMENDMENT
3	17/10/23	AsA	RR	JC	NEW RNAV-Z RWY 24 (VNAV), RTCC REMOVED
2	17/03/23	AsA	RR	JC	REVISED RNAV-X (RNP) RWY 03
1	20/02/23	AsA	RR	JC	INITIAL RELEASE

<p>Level 2, 2 George Wlencke Drive Perth Airport WA 6105 AUSTRALIA</p>	<p>CLIENT PERTH AIRPORT PTY. LTD.</p> <p>AIRPORT PERTH INTERNATIONAL AIRPORT (YPPH)</p> <p>PROJECT 2023 PRESCRIBED AIRSPACE</p>	<p>PREPARED BY  AV3D</p> <p>AV3D PTY. LTD. WWW.AV3D.COM.AU</p>	<p>COPYRIGHT This drawing is protected by copyright and no part of this drawing may be reproduced in any form without the prior written permission from AV3D Pty Ltd. AV3D Pty Ltd does not provide any warranties and accepts no liability arising out of the use of this drawing for any purpose other than originally intended.</p>	<p>DRAWN J.CHRISTISON</p> <p>CHECKED R.ROMANO</p> <p>APPROVED J.CHRISTISON</p>	<p>APPROVALS</p> <p>DATE 20/02/23</p> <p>DATE 20/02/23</p> <p>DATE 20/02/23</p>	<p>TITLE PERTH INTERNATIONAL AIRPORT PANS-OPS COMBINED CRITICAL SURFACES FUTURE 3 RWYS (ULTIMATE) - 60KM</p> <p>DATUM GDA94-50</p> <p>SCALE 1:500,000</p> <p>DRAWING No PPH-3RWY-ULT-PANS-1</p> <p>SHEET 1 OF 7</p> <p>REV 3</p>
--	---	--	--	--	---	--



**NOTES:**

- 1) HP = HORIZONTAL PLANE
- 2) ANNOTATED HEIGHTS INDICATE THE LOWEST CRITICAL SURFACE ELEVATION OF THE PANS-OPS PROTECTION SURFACE IN METRES (AHD)
- 3) CONTOUR INTERVALS 10m
- 4) GRID REFERENCE WGS84
- 5) AIRSPACE PROTECTION SURFACES ARE NOT SHOWN FOR THE OTHER AIRPORTS DEPICTED ON THIS CHART. FOR MORE DETAILS CONTACT AIRSERVICES AUSTRALIA OR THE DEPARTMENT OF DEFENCE
- 6) REFER TO THE REFERENCE DRAWING NOTED FOR INNER CONTOUR DETAIL

**LEGEND:**

- PRECISION APPROACH
- NON-PRECISION APPROACH
- MISSED APPROACH
- STANDARD ARRIVAL
- DEPARTURE
- CIRCLING
- MSA

-XX km- DISTANCE FROM AERODROME REFERENCE POINT (ARP)

— 50m CONTOURS

0 2,500 5,000 7,500 10,000 12,500m

SCALE 1:250,000 ON A3

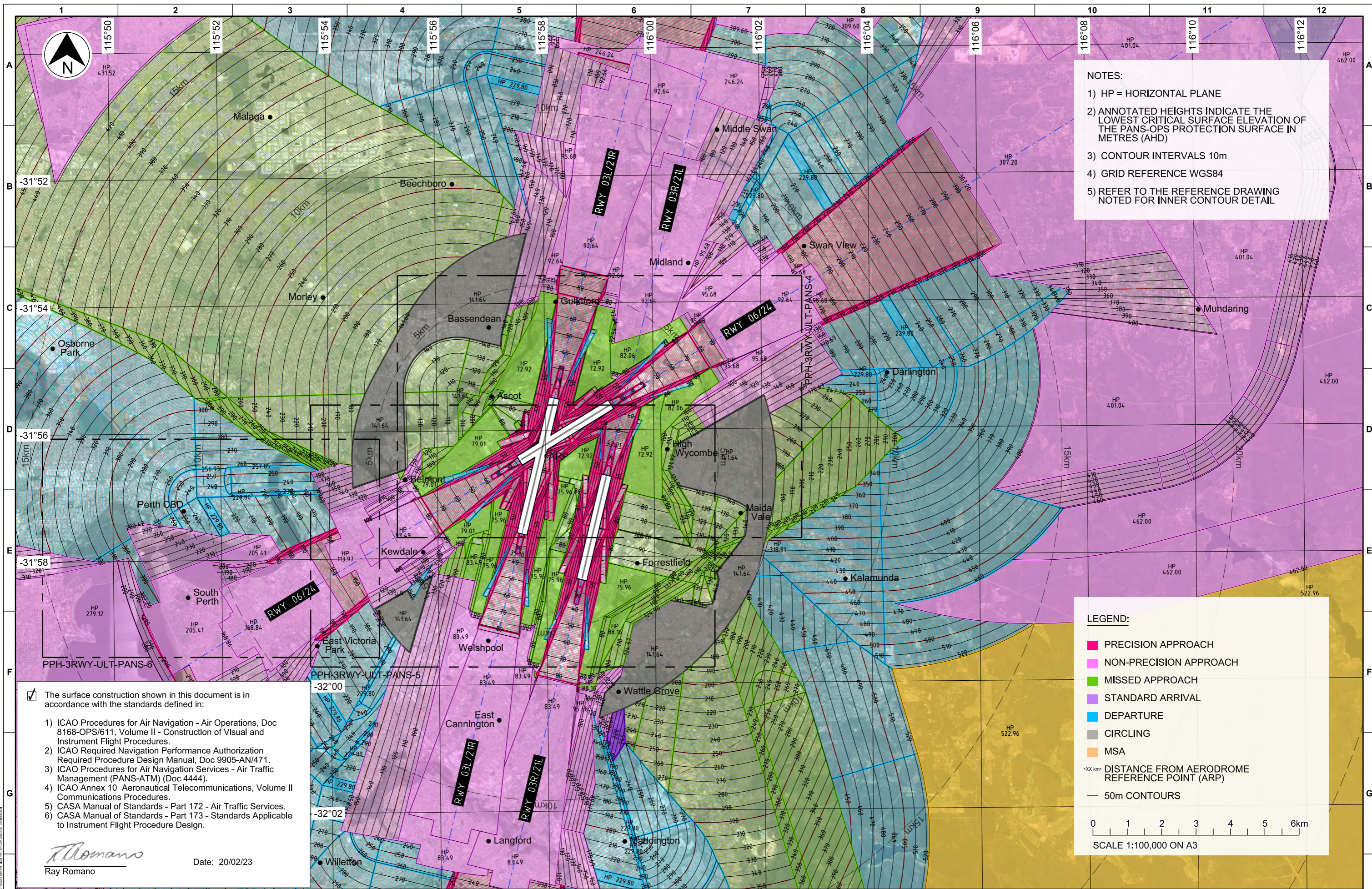
The surface construction shown in this document is in accordance with the standards defined in:

- 1) ICAO Procedures for Air Navigation - Air Operations, Doc 8168-OPS/611, Volume II - Construction of Visual and Instrument Flight Procedures.
- 2) ICAO Required Navigation Performance Authorization Required Procedure Design Manual, Doc 9905-AN/471.
- 3) ICAO Procedures for Air Navigation Services - Air Traffic Management (PANS-ATM) (Doc 4444).
- 4) ICAO Annex 10 Aeronautical Telecommunications, Volume II Communications Procedures.
- 5) CASA Manual of Standards - Part 172 - Air Traffic Services.
- 6) CASA Manual of Standards - Part 173 - Standards Applicable to Instrument Flight Procedure Design.

*Ray Romano*  
 Ray Romano Date: 20/02/23

REV	DATE	DESIGN	CHKD	APPR	AMENDMENT
3	17/10/23	AsA	RR	JC	NEW RNAV-Z RWY 24 (VNAV), RTCC REMOVED
2	17/03/23	AsA	RR	JC	REVISED RNAV-X (RNP) RWY 03
1	20/02/23	AsA	RR	JC	INITIAL RELEASE

<p>Level 2, 2 George Wrencke Drive Perth Airport WA 6105 AUSTRALIA</p>	<p>CLIENT PERTH AIRPORT PTY. LTD.</p>	<p>PREPARED BY AV3D</p>	<p>COPYRIGHT This drawing is protected by copyright and no part of this drawing may be reproduced in any form without the prior written permission from AV3D Pty Ltd. AV3D Pty Ltd does not provide any warranties and accepts no liability arising out of the use of this drawing for any purpose other than originally intended.</p>	<p>APPROVALS</p> <table border="1"> <tr> <td>DRAWN J.CHRISTISON</td> <td>DATE 20/02/23</td> </tr> <tr> <td>CHECKED R.ROMANO</td> <td>DATE 20/02/23</td> </tr> <tr> <td>APPROVED J.CHRISTISON</td> <td>DATE 20/02/23</td> </tr> </table>	DRAWN J.CHRISTISON	DATE 20/02/23	CHECKED R.ROMANO	DATE 20/02/23	APPROVED J.CHRISTISON	DATE 20/02/23	<p>TITLE PERTH INTERNATIONAL AIRPORT PANS-OPS COMBINED CRITICAL SURFACES FUTURE 3 RWYS (ULTIMATE) - 30KM</p>
	DRAWN J.CHRISTISON	DATE 20/02/23									
CHECKED R.ROMANO	DATE 20/02/23										
APPROVED J.CHRISTISON	DATE 20/02/23										
<p>PROJECT 2023 PRESCRIBED AIRSPACE</p>	<p>AIRPORT PERTH INTERNATIONAL AIRPORT (YPPH)</p>	<p>AV3D PTY. LTD. WWW.AV3D.COM.AU</p>	<p>DATUM GDA94-50</p> <p>SCALE 1:250,000</p> <p>DRAWING No PPH-3RWY-ULT-PANS-2</p>	<p>SHEET 2 OF 7</p> <p>REV 3</p>							



**NOTES:**

- 1) HP = HORIZONTAL PLANE
- 2) ANNOTATED HEIGHTS INDICATE THE LOWEST CRITICAL SURFACE ELEVATION OF THE PANS-OPS PROTECTION SURFACE IN METRES (AHD)
- 3) CONTOUR INTERVALS 10m
- 4) GRID REFERENCE WGS84
- 5) REFER TO THE REFERENCE DRAWING NOTED FOR INNER CONTOUR DETAIL

**LEGEND:**

- PRECISION APPROACH
- NON-PRECISION APPROACH
- MISSED APPROACH
- STANDARD ARRIVAL
- DEPARTURE
- CIRCLING
- MSA
- XX km- DISTANCE FROM AERODROME REFERENCE POINT (ARP)
- 50m CONTOURS

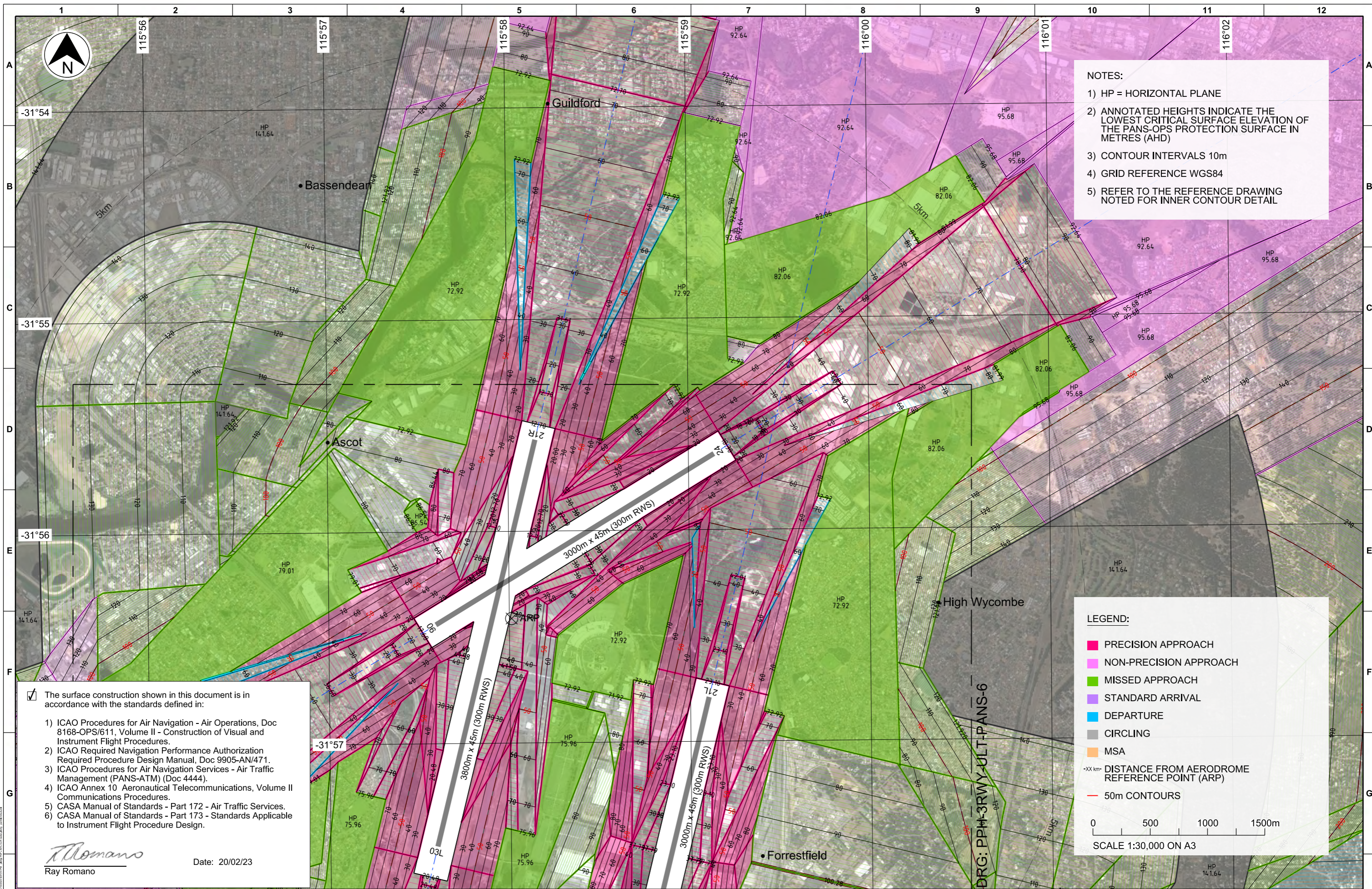
0 1 2 3 4 5 6km  
SCALE 1:100,000 ON A3

- The surface construction shown in this document is in accordance with the standards defined in:
- 1) ICAO Procedures for Air Navigation - Air Operations, Doc 8168-OPS/611, Volume II - Construction of Visual and Instrument Flight Procedures.
  - 2) ICAO Required Navigation Performance Authorization Required Procedure Design Manual, Doc 9905-AN/471.
  - 3) ICAO Procedures for Air Navigation Services - Air Traffic Management (PANS-ATM) (Doc 4444).
  - 4) ICAO Annex 10 Aeronautical Telecommunications, Volume II Communications Procedures.
  - 5) CASA Manual of Standards - Part 172 - Air Traffic Services.
  - 6) CASA Manual of Standards - Part 173 - Standards Applicable to Instrument Flight Procedure Design.

*Ray Romano*  
Ray Romano  
Date: 20/02/23

REV	DATE	DESIGN	CHKD	APPR	AMENDMENT
3	17/10/23	ASA	RR	JC	NEW RNAV-Z RWY 24 (VNAV), RTCC REMOVED
2	17/03/23	AsA	RR	JC	REVISED RNAV-X (RNP) RWY 03
1	20/02/23	AsA	RR	JC	INITIAL RELEASE

 Level 2, 2 George Wicken Drive Perth Airport WA 6105 AUSTRALIA	CLIENT <b>PERTH AIRPORT PTY. LTD.</b>	 AV3D PTY. LTD. WWW.AV3D.COM.AU	DRAWN <b>J.CHRISTISON</b>	DATE <b>20/02/23</b>	<b>PERTH INTERNATIONAL AIRPORT          PANS-OPS COMBINED CRITICAL SURFACES          FUTURE 3 RWYS (ULTIMATE) - 15KM</b>
	AIRPORT <b>PERTH INTERNATIONAL AIRPORT (YPPH)</b>		CHECKED <b>R.ROMANO</b>	DATE <b>20/02/23</b>	
PROJECT <b>2023 PRESCRIBED AIRSPACE</b>	PREPARED BY <b>AV3D</b>	COPYRIGHT This drawing is protected by copyright and no part of this drawing may be reproduced in any form without the prior written permission from AV3D Pty Ltd. AV3D Pty Ltd does not provide any warranties and accepts no liability arising out of the use of this drawing for any purpose other than originally intended.	APPROVED <b>J.CHRISTISON</b>	DATE <b>20/02/23</b>	SCALE <b>1:100,000</b>
					DRAWING No <b>PPH-3RWY-ULT-PANS-3</b>
					SHEET <b>3 OF 7</b>
					REV <b>3</b>



**NOTES:**

- 1) HP = HORIZONTAL PLANE
- 2) ANNOTATED HEIGHTS INDICATE THE LOWEST CRITICAL SURFACE ELEVATION OF THE PANS-OPS PROTECTION SURFACE IN METRES (AHD)
- 3) CONTOUR INTERVALS 10m
- 4) GRID REFERENCE WGS84
- 5) REFER TO THE REFERENCE DRAWING NOTED FOR INNER CONTOUR DETAIL

**LEGEND:**

- PRECISION APPROACH
- NON-PRECISION APPROACH
- MISSED APPROACH
- STANDARD ARRIVAL
- DEPARTURE
- CIRCLING
- MSA
- XX km- DISTANCE FROM AERODROME REFERENCE POINT (ARP)
- 50m CONTOURS

0 500 1000 1500m  
SCALE 1:30,000 ON A3

The surface construction shown in this document is in accordance with the standards defined in:

- 1) ICAO Procedures for Air Navigation - Air Operations, Doc 8168-OPS/611, Volume II - Construction of Visual and Instrument Flight Procedures.
- 2) ICAO Required Navigation Performance Authorization Required Procedure Design Manual, Doc 9905-AN/471.
- 3) ICAO Procedures for Air Navigation Services - Air Traffic Management (PANS-ATM) (Doc 4444).
- 4) ICAO Annex 10 Aeronautical Telecommunications, Volume II Communications Procedures.
- 5) CASA Manual of Standards - Part 172 - Air Traffic Services.
- 6) CASA Manual of Standards - Part 173 - Standards Applicable to Instrument Flight Procedure Design.

*Ray Romano*  
Ray Romano  
Date: 20/02/23

REV	DATE	DESIGN	CHKD	APPR	AMENDMENT
3	17/10/23	AsA	RR	JC	NEW RNAV-Z RWY 24 (VNAV), RTCC REMOVED
2	17/03/23	AsA	RR	JC	REVISED RNAV-X (RNP) RWY 03
1	20/02/23	AsA	RR	JC	INITIAL RELEASE

**Perth Airport**  
Level 2, 2 George Wenecke Drive  
Perth Airport WA 6105  
AUSTRALIA

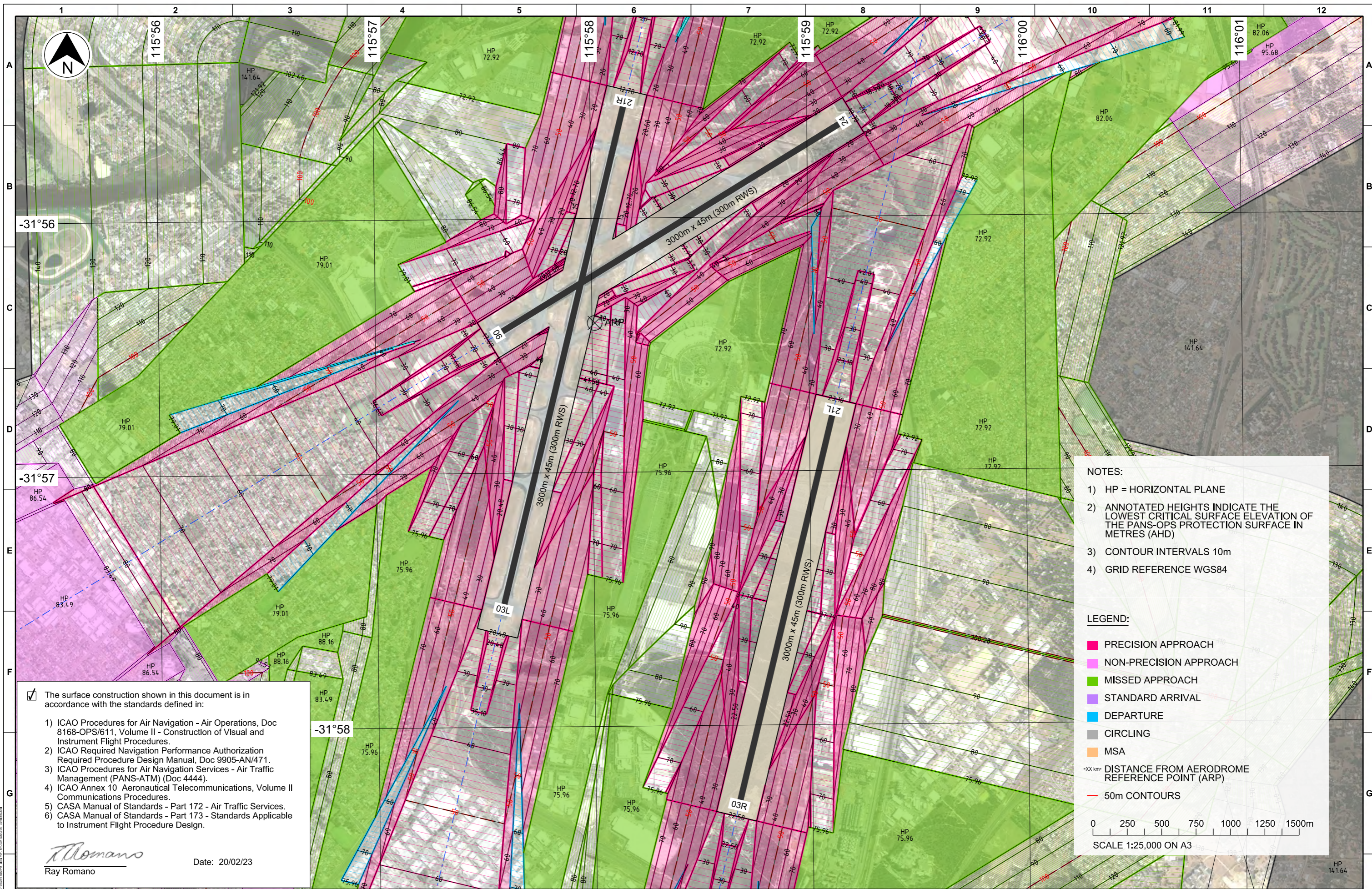
CLIENT  
PERTH AIRPORT PTY. LTD.  
AIRPORT  
PERTH INTERNATIONAL AIRPORT (YPPH)  
PROJECT  
2023 PRESCRIBED AIRSPACE

PREPARED BY  
**AV3D**  
AV3D PTY. LTD. WWW.AV3D.COM.AU

COPYRIGHT  
This drawing is protected by copyright and no part of this drawing may be reproduced in any form without the prior written permission from AV3D Pty Ltd.  
AV3D Pty Ltd does not provide any warranties and accepts no liability arising out of the use of this drawing for any purpose other than originally intended.

DRAWN	CHECKED	APPROVED	DATE
J.CHRISTISON	R.ROMANO	J.CHRISTISON	20/02/23

TITLE		DATUM	SCALE	DRAWING No	SHEET	REV
PERTH INTERNATIONAL AIRPORT PANS-OPS COMBINED CRITICAL SURFACES FUTURE 3 RWYS (ULTIMATE) - AIRPORT NORTH		GDA94-50	1:30,000	PPH-3RWY-ULT-PANS-4	4 OF 7	3



- NOTES:**
- 1) HP = HORIZONTAL PLANE
  - 2) ANNOTATED HEIGHTS INDICATE THE LOWEST CRITICAL SURFACE ELEVATION OF THE PANS-OPS PROTECTION SURFACE IN METRES (AHD)
  - 3) CONTOUR INTERVALS 10m
  - 4) GRID REFERENCE WGS84

**LEGEND:**

- PRECISION APPROACH
- NON-PRECISION APPROACH
- MISSED APPROACH
- STANDARD ARRIVAL
- DEPARTURE
- CIRCLING
- MSA
- XX km DISTANCE FROM AERODROME REFERENCE POINT (ARP)
- 50m CONTOURS

0 250 500 750 1000 1250 1500m  
SCALE 1:25,000 ON A3

- The surface construction shown in this document is in accordance with the standards defined in:
- 1) ICAO Procedures for Air Navigation - Air Operations, Doc 8168-OPS/611, Volume II - Construction of Visual and Instrument Flight Procedures.
  - 2) ICAO Required Navigation Performance Authorization Required Procedure Design Manual, Doc 9905-AN/471.
  - 3) ICAO Procedures for Air Navigation Services - Air Traffic Management (PANS-ATM) (Doc 4444).
  - 4) ICAO Annex 10 Aeronautical Telecommunications, Volume II Communications Procedures.
  - 5) CASA Manual of Standards - Part 172 - Air Traffic Services.
  - 6) CASA Manual of Standards - Part 173 - Standards Applicable to Instrument Flight Procedure Design.

*Ray Romano*  
Ray Romano Date: 20/02/23

REV	DATE	DESIGN	CHKD	APPR	AMENDMENT
3	17/10/23	AsA	RR	JC	NEW RNAV-Z RWY 24 (VNAV), RTCC REMOVED
2	17/03/23	AsA	RR	JC	REVISED RNAV-X (RNP) RWY 03
1	20/02/23	AsA	RR	JC	INITIAL RELEASE

**Perth Airport**  
Level 2, 2 George Wlencke Drive  
Perth Airport WA 6105  
AUSTRALIA

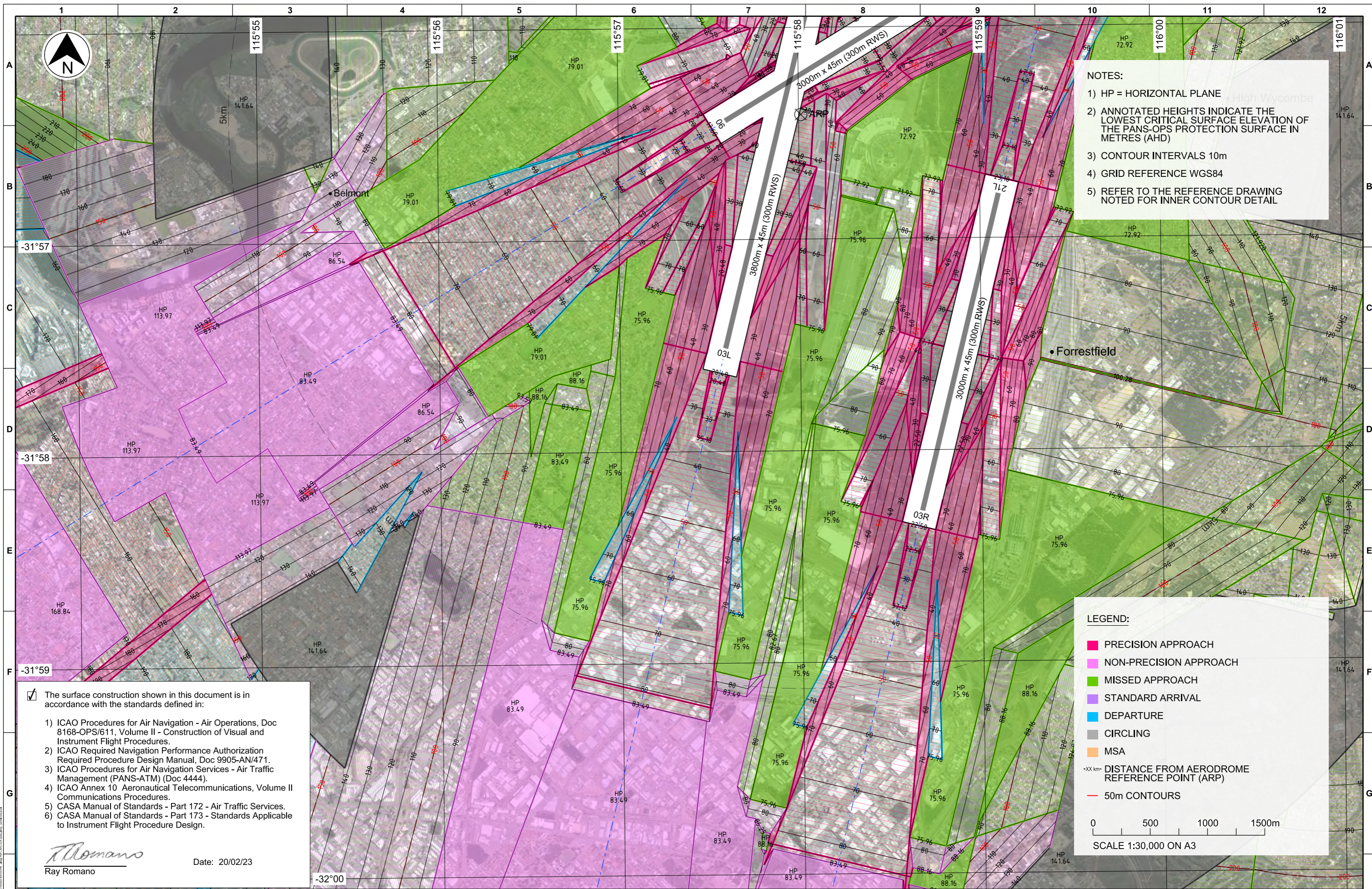
CLIENT  
PERTH AIRPORT PTY. LTD.  
AIRPORT  
PERTH INTERNATIONAL AIRPORT (YPPH)  
PROJECT  
2023 PRESCRIBED AIRSPACE

PREPARED BY  
**AV3D**  
AV3D PTY. LTD. WWW.AV3D.COM.AU

COPYRIGHT  
This drawing is protected by copyright and no part of this drawing may be reproduced in any form without the prior written permission from AV3D Pty Ltd.  
AV3D Pty Ltd does not provide any warranties and accepts no liability arising out of the use of this drawing for any purpose other than originally intended.

DRAWN	CHECKED	APPROVED	DATE
J.CHRISTISON	R.ROMANO	J.CHRISTISON	20/02/23

DATE		TITLE		DATUM	SCALE	DRAWING No	SHEET	REV
20/02/23	20/02/23	PERTH INTERNATIONAL AIRPORT PANS-OPS COMBINED CRITICAL SURFACES FUTURE 3 RWYS (ULTIMATE) - AIRPORT		GDA94-50	1:25,000	PPH-3RWY-ULT-PANS-6	6 OF 7	3



**NOTES:**

- 1) HP = HORIZONTAL PLANE
- 2) ANNOTATED HEIGHTS INDICATE THE LOWEST CRITICAL SURFACE ELEVATION OF THE PANS-OPS PROTECTION SURFACE IN METRES (AHD)
- 3) CONTOUR INTERVALS 10m
- 4) GRID REFERENCE WGS84
- 5) REFER TO THE REFERENCE DRAWING NOTED FOR INNER CONTOUR DETAIL

**LEGEND:**

- PRECISION APPROACH
- NON-PRECISION APPROACH
- MISSED APPROACH
- STANDARD ARRIVAL
- DEPARTURE
- CIRCLING
- MSA

-XX km- DISTANCE FROM AERODROME REFERENCE POINT (ARP)

— 50m CONTOURS

0 500 1000 1500m

SCALE 1:30,000 ON A3

The surface construction shown in this document is in accordance with the standards defined in:

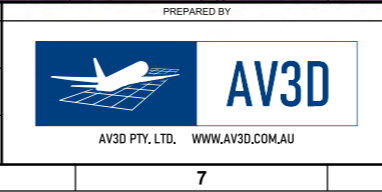
- 1) ICAO Procedures for Air Navigation - Air Operations, Doc 8168-OPS/611, Volume II - Construction of Visual and Instrument Flight Procedures.
- 2) ICAO Required Navigation Performance Authorization Required Procedure Design Manual, Doc 9905-AN/471.
- 3) ICAO Procedures for Air Navigation Services - Air Traffic Management (PANS-ATM) (Doc 4444).
- 4) ICAO Annex 10 Aeronautical Telecommunications, Volume II Communications Procedures.
- 5) CASA Manual of Standards - Part 172 - Air Traffic Services.
- 6) CASA Manual of Standards - Part 173 - Standards Applicable to Instrument Flight Procedure Design.

*Ray Romano*  
 Ray Romano Date: 20/02/23

REV	DATE	DESIGN	CHKD	APPR	AMENDMENT
3	17/10/23	AsA	RR	JC	NEW RNAV-Z RWY 24 (VNAV), RTCC REMOVED
2	17/03/23	AsA	RR	JC	REVISED RNAV-X (RNP) RWY 03
1	20/02/23	AsA	RR	JC	INITIAL RELEASE



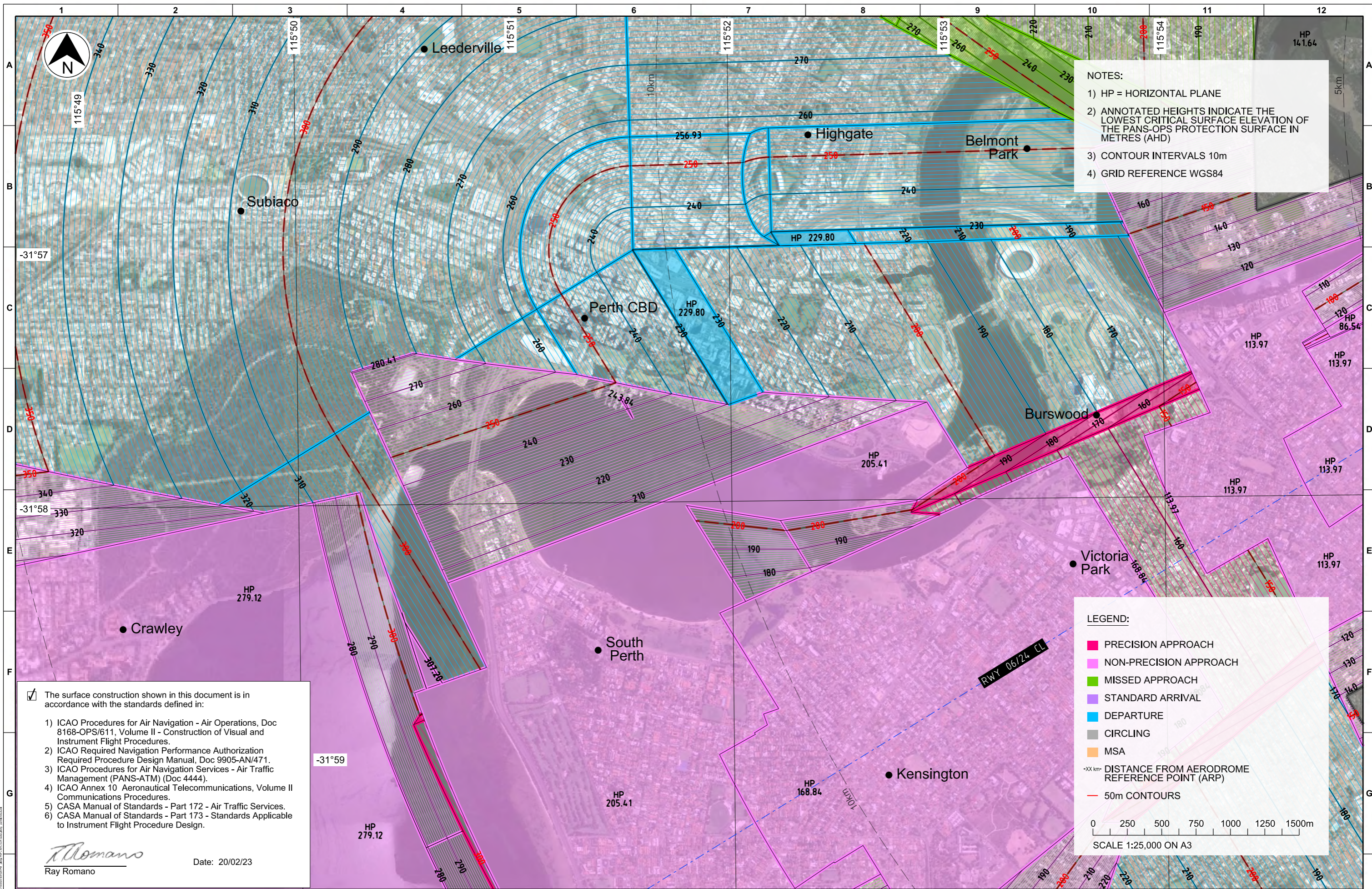
CLIENT  
 PERTH AIRPORT PTY. LTD.  
 AIRPORT  
 PERTH INTERNATIONAL AIRPORT (YPPH)  
 PROJECT  
 2023 PRESCRIBED AIRSPACE



PREPARED BY  
 AV3D PTY. LTD.  
 COPYRIGHT  
 This drawing is protected by copyright and no part of this drawing may be reproduced in any form without the prior written permission from AV3D Pty Ltd.  
 AV3D Pty Ltd does not provide any warranties and accepts no liability arising out of the use of this drawing for any purpose other than originally intended.

APPROVALS	DATE
DRAWN J.CHRISTISON	20/02/23
CHECKED R.ROMANO	20/02/23
APPROVED J.CHRISTISON	20/02/23

TITLE		DATUM	SCALE	DRAWING No	SHEET	REV
PERTH INTERNATIONAL AIRPORT PANS-OPS COMBINED CRITICAL SURFACES FUTURE 3 RWYS (ULTIMATE) - AIRPORT SOUTH		GDA94-50	1:30,000	PPH-3RWY-ULT-PANS-5	5 OF 7	3



**NOTES:**

- 1) HP = HORIZONTAL PLANE
- 2) ANNOTATED HEIGHTS INDICATE THE LOWEST CRITICAL SURFACE ELEVATION OF THE PANS-OPS PROTECTION SURFACE IN METRES (AHD)
- 3) CONTOUR INTERVALS 10m
- 4) GRID REFERENCE WGS84

**LEGEND:**

- PRECISION APPROACH
- NON-PRECISION APPROACH
- MISSED APPROACH
- STANDARD ARRIVAL
- DEPARTURE
- CIRCLING
- MSA
- XX km- DISTANCE FROM AERODROME REFERENCE POINT (ARP)
- - - 50m CONTOURS

0 250 500 750 1000 1250 1500m  
SCALE 1:25,000 ON A3

The surface construction shown in this document is in accordance with the standards defined in:

- 1) ICAO Procedures for Air Navigation - Air Operations, Doc 8168-OPS/611, Volume II - Construction of Visual and Instrument Flight Procedures.
- 2) ICAO Required Navigation Performance Authorization Required Procedure Design Manual, Doc 9905-AN/471.
- 3) ICAO Procedures for Air Navigation Services - Air Traffic Management (PANS-ATM) (Doc 4444).
- 4) ICAO Annex 10 Aeronautical Telecommunications, Volume II Communications Procedures.
- 5) CASA Manual of Standards - Part 172 - Air Traffic Services.
- 6) CASA Manual of Standards - Part 173 - Standards Applicable to Instrument Flight Procedure Design.

*Ray Romano*  
Ray Romano  
Date: 20/02/23

REV	DATE	DESIGN	CHKD	APPR	AMENDMENT
3	17/10/23	AsA	RR	JC	NEW RNAV-Z RWY 24 (VNAV), RTCC REMOVED
2	17/03/23	AsA	RR	JC	REVISED RNAV-X (RNP) RWY 03
1	20/02/23	AsA	RR	JC	INITIAL RELEASE

 Level 2, 2 George Wrencke Drive Perth Airport WA 6105 AUSTRALIA	CLIENT <b>PERTH AIRPORT PTY. LTD.</b>	PREPARED BY  <b>AV3D</b> AV3D PTY. LTD. WWW.AV3D.COM.AU	COPYRIGHT This drawing is protected by copyright and no part of this drawing may be reproduced in any form without the prior written permission from AV3D Pty Ltd. AV3D Pty Ltd does not provide any warranties and accepts no liability arising out of the use of this drawing for any purpose other than originally intended.	APPROVALS DRAWN: J.CHRISTISON CHECKED: R.ROMANO APPROVED: J.CHRISTISON DATE: 20/02/23	TITLE <b>PERTH INTERNATIONAL AIRPORT          PANS-OPS COMBINED CRITICAL SURFACES          FUTURE 3 RWYS (ULTIMATE) - CBD &amp; SURROUNDS</b>
	PROJECT <b>2023 PRESCRIBED AIRSPACE</b>	AIRPORT <b>PERTH INTERNATIONAL AIRPORT (YPPH)</b>	DATUM: GDA94-50 SCALE: 1:25,000 DRAWING No: PPH-3RWY-ULT-PANS-7 SHEET: 7 OF 7 REV: 3		