

**NOTES:**

- 1) HP = HORIZONTAL PLANE
- 2) ANNOTATED HEIGHTS INDICATE THE LOWEST CRITICAL SURFACE ELEVATION OF THE PANS-OPS PROTECTION SURFACE IN METRES (AHD)
- 3) CONTOUR INTERVALS 10m
- 4) GRID REFERENCE WGS84
- 5) AIRSPACE PROTECTION SURFACES ARE NOT SHOWN FOR THE OTHER AIRPORTS DEPICTED ON THIS CHART. FOR MORE DETAILS CONTACT AIRSERVICES AUSTRALIA OR THE DEPARTMENT OF DEFENCE
- 6) REFER TO THE REFERENCE DRAWING NOTED FOR INNER CONTOUR DETAIL

**LEGEND:**

- PRECISION APPROACH
- NON-PRECISION APPROACH
- MISSED APPROACH
- STANDARD ARRIVAL
- DEPARTURE
- CIRCLING
- MSA
- XX km- DISTANCE FROM AERODROME REFERENCE POINT (ARP)
- 50m CONTOURS

0 10 20 30km  
SCALE 1:500,000 ON A3

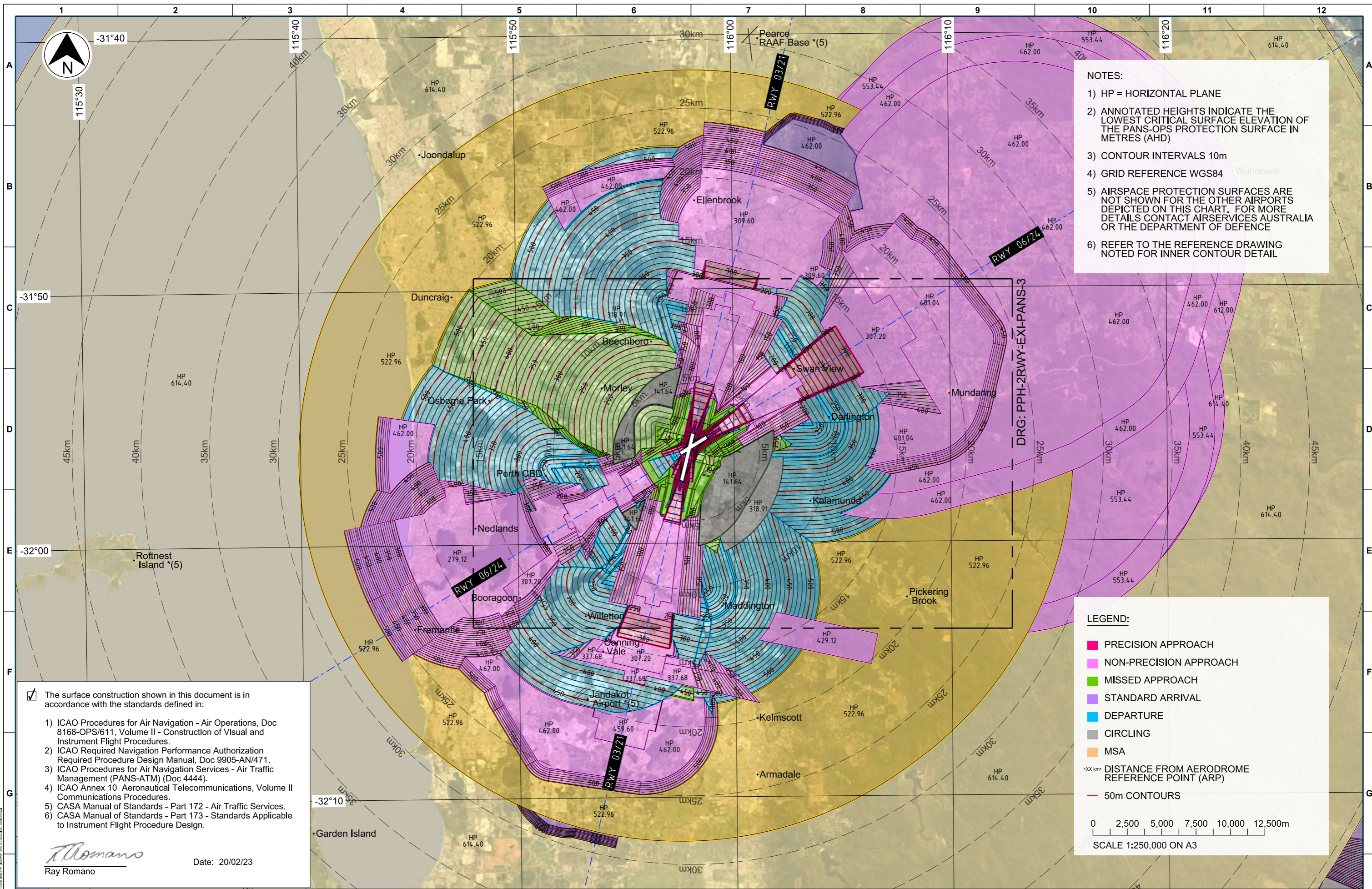
The surface construction shown in this document is in accordance with the standards defined in:

- 1) ICAO Procedures for Air Navigation - Air Operations, Doc 8168-OPS/611, Volume II - Construction of Visual and Instrument Flight Procedures.
- 2) ICAO Required Navigation Performance Authorization Required Procedure Design Manual, Doc 9905-AN/471.
- 3) ICAO Procedures for Air Navigation Services - Air Traffic Management (PANS-ATM) (Doc 4444).
- 4) ICAO Annex 10 Aeronautical Telecommunications, Volume II Communications Procedures.
- 5) CASA Manual of Standards - Part 172 - Air Traffic Services.
- 6) CASA Manual of Standards - Part 173 - Standards Applicable to Instrument Flight Procedure Design.

*Ray Romano*  
Ray Romano  
Date: 20/02/23

REV	DATE	DESIGN	CHKD	APPR	AMENDMENT
3	17/10/23	AsA	RR	JC	NEW RNAV-Z RWY 24 (VNAV), RTCC REMOVED
2	17/03/23	AsA	RR	JC	REVISED RNAV-X (RNP) RWY 03
1	20/02/23	AsA	RR	JC	INITIAL RELEASE

<p>Level 2, 2 George Wenecke Drive Perth Airport WA 6105 AUSTRALIA</p>	<p>CLIENT PERTH AIRPORT PTY. LTD.</p>	<p>PREPARED BY  AV3D</p>	<p>COPYRIGHT This drawing is protected by copyright and no part of this drawing may be reproduced in any form without the prior written permission from AV3D Pty Ltd. AV3D Pty Ltd does not provide any warranties and accepts no liability arising out of the use of this drawing for any purpose other than originally intended.</p>	<p>APPROVALS DRAWN: J.CHRISTISON CHECKED: R.ROMANO APPROVED: J.CHRISTISON</p>	<p>DATE 20/02/23 20/02/23 20/02/23</p>	<p>TITLE PERTH INTERNATIONAL AIRPORT PANS-OPS COMBINED CRITICAL SURFACES EXISTING 2 RUNWAYS - 60KM</p>
	<p>PROJECT 2023 PRESCRIBED AIRSPACE</p>	<p>PROJECT PERTH INTERNATIONAL AIRPORT (YPPH)</p>	<p>AV3D PTY. LTD. WWW.AV3D.COM.AU</p>	<p>DATUM: GDA94-50 SCALE: 1:500,000 DRAWING No: PPH-2RWY-EXI-PANS-1</p>	<p>SHEET: 1 OF 7 REV: 3</p>	



**NOTES:**

- 1) HP = HORIZONTAL PLANE
- 2) ANNOTATED HEIGHTS INDICATE THE LOWEST CRITICAL SURFACE ELEVATION OF THE PANS-OPS PROTECTION SURFACE IN METRES (AHD)
- 3) CONTOUR INTERVALS 10m
- 4) GRID REFERENCE WGS84
- 5) AIRSPACE PROTECTION SURFACES ARE NOT SHOWN FOR THE OTHER AIRPORTS DEPICTED ON THIS CHART. FOR MORE DETAILS CONTACT AIRSERVICES AUSTRALIA OR THE DEPARTMENT OF DEFENCE
- 6) REFER TO THE REFERENCE DRAWING NOTED FOR INNER CONTOUR DETAIL

**LEGEND:**

- PRECISION APPROACH
- NON-PRECISION APPROACH
- MISSED APPROACH
- STANDARD ARRIVAL
- DEPARTURE
- CIRCLING
- MSA
- XX km- DISTANCE FROM AERODROME REFERENCE POINT (ARP)
- - - 50m CONTOURS

0 2,500 5,000 7,500 10,000 12,500m  
SCALE 1:250,000 ON A3

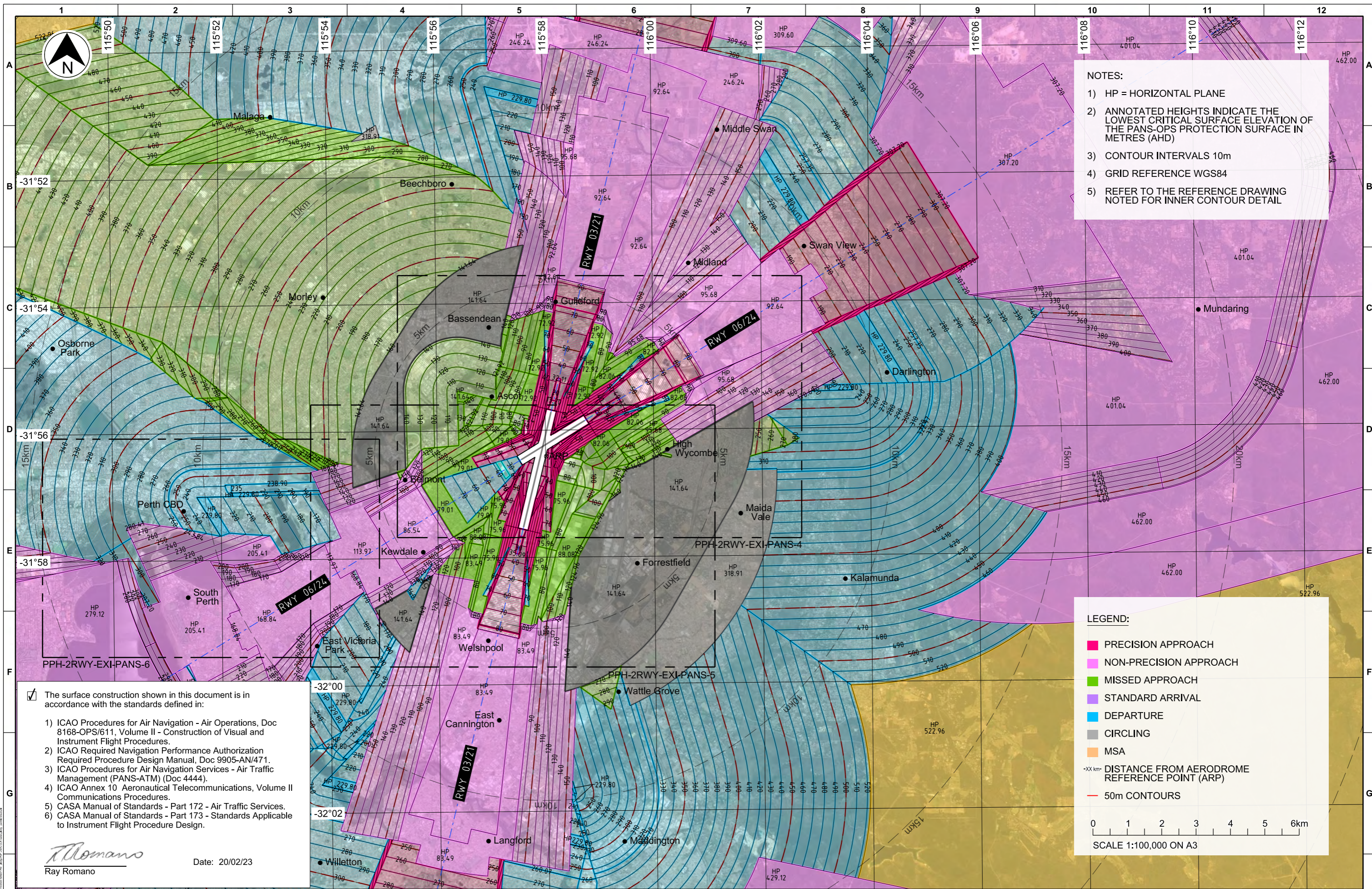
The surface construction shown in this document is in accordance with the standards defined in:

- 1) ICAO Procedures for Air Navigation - Air Operations, Doc 8168-OPS/611, Volume II - Construction of Visual and Instrument Flight Procedures.
- 2) ICAO Required Navigation Performance Authorization Required Procedure Design Manual, Doc 9905-AN/471.
- 3) ICAO Procedures for Air Navigation Services - Air Traffic Management (PANS-ATM) (Doc 4444).
- 4) ICAO Annex 10 Aeronautical Telecommunications, Volume II Communications Procedures.
- 5) CASA Manual of Standards - Part 172 - Air Traffic Services.
- 6) CASA Manual of Standards - Part 173 - Standards Applicable to Instrument Flight Procedure Design.

*Ray Romano*  
Ray Romano  
Date: 20/02/23

REV	DATE	DESIGN	CHKD	APPR	AMENDMENT
3	17/10/23	AsA	RR	JC	NEW RNAV-Z RWY 24 (VNAV), RTCC REMOVED
2	17/03/23	AsA	RR	JC	REVISED RNAV-X (RNP) RWY 03
1	20/02/23	AsA	RR	JC	INITIAL RELEASE

 Level 2, 2 George Wenecke Drive Perth Airport WA 6105 AUSTRALIA	CLIENT <b>PERTH AIRPORT PTY. LTD.</b>	PREPARED BY  <b>AV3D</b> AV3D PTY. LTD. WWW.AV3D.COM.AU	COPYRIGHT This drawing is protected by copyright and no part of this drawing may be reproduced in any form without the prior written permission from AV3D Pty Ltd. AV3D Pty Ltd does not provide any warranties and accepts no liability arising out of the use of this drawing for any purpose other than originally intended.	APPROVALS DRAWN <b>J. CHRISTISON</b> CHECKED <b>R. ROMANO</b> APPROVED <b>J. CHRISTISON</b>	DATE <b>20/02/23</b> DATE <b>20/02/23</b> DATE <b>20/02/23</b>	TITLE <b>PERTH INTERNATIONAL AIRPORT          PANS-OPS COMBINED CRITICAL SURFACES          EXISTING 2 RUNWAYS - 30KM</b>	DATUM <b>GDA94-50</b>	SCALE <b>1:250,000</b>	DRAWING No <b>PPH-2RWY-EXI-PANS-2</b>	SHEET <b>2 OF 7</b>	REV <b>3</b>
---	--	--	---	---	---	---	--------------------------	---------------------------	--	------------------------	-----------------



**NOTES:**

- 1) HP = HORIZONTAL PLANE
- 2) ANNOTATED HEIGHTS INDICATE THE LOWEST CRITICAL SURFACE ELEVATION OF THE PANS-OPS PROTECTION SURFACE IN METRES (AHD)
- 3) CONTOUR INTERVALS 10m
- 4) GRID REFERENCE WGS84
- 5) REFER TO THE REFERENCE DRAWING NOTED FOR INNER CONTOUR DETAIL

**LEGEND:**

- PRECISION APPROACH
- NON-PRECISION APPROACH
- MISSED APPROACH
- STANDARD ARRIVAL
- DEPARTURE
- CIRCLING
- MSA
- XX km- DISTANCE FROM AERODROME REFERENCE POINT (ARP)
- 50m CONTOURS

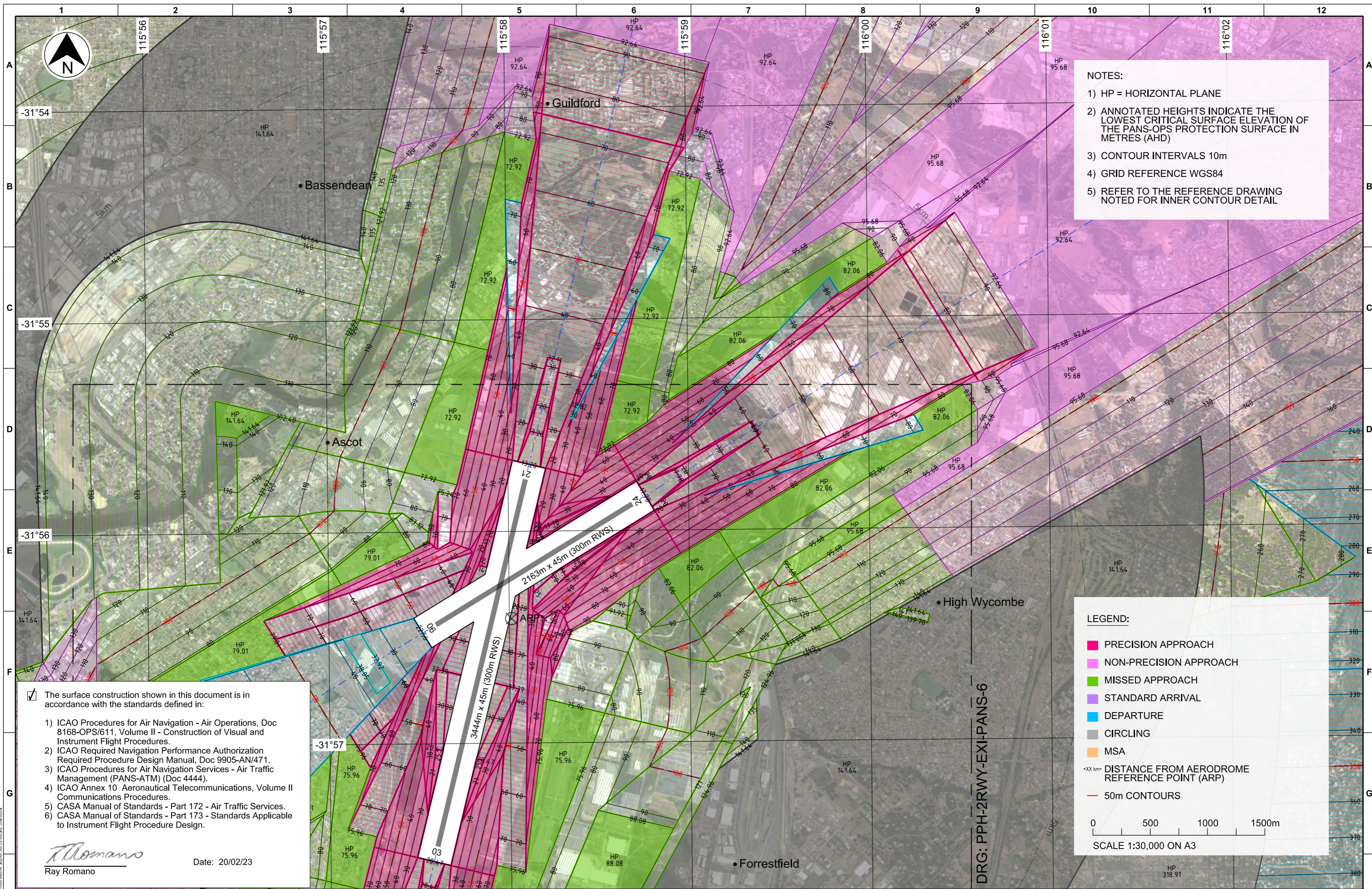
0 1 2 3 4 5 6km  
SCALE 1:100,000 ON A3

- The surface construction shown in this document is in accordance with the standards defined in:
- 1) ICAO Procedures for Air Navigation - Air Operations, Doc 8168-OPS/611, Volume II - Construction of Visual and Instrument Flight Procedures.
  - 2) ICAO Required Navigation Performance Authorization Required Procedure Design Manual, Doc 9905-AN/471.
  - 3) ICAO Procedures for Air Navigation Services - Air Traffic Management (PANS-ATM) (Doc 4444).
  - 4) ICAO Annex 10 Aeronautical Telecommunications, Volume II Communications Procedures.
  - 5) CASA Manual of Standards - Part 172 - Air Traffic Services.
  - 6) CASA Manual of Standards - Part 173 - Standards Applicable to Instrument Flight Procedure Design.

*Ray Romano*  
Ray Romano  
Date: 20/02/23

REV	DATE	DESIGN	CHKD	APPR	AMENDMENT
3	17/10/23	ASA	RR	JC	NEW RNAV-Z RWY 24 (VNAV), RTCC REMOVED
2	17/03/23	AsA	RR	JC	REVISED RNAV-X (RNP) RWY 03
1	20/02/23	AsA	RR	JC	INITIAL RELEASE

 Level 2, 2 George Wrencke Drive Perth Airport WA 6105 AUSTRALIA	CLIENT <b>PERTH AIRPORT PTY. LTD.</b>	 AV3D PTY. LTD. WWW.AV3D.COM.AU	COPYRIGHT This drawing is protected by copyright and no part of this drawing may be reproduced in any form without the prior written permission from AV3D Pty Ltd. AV3D Pty Ltd does not provide any warranties and accepts no liability arising out of the use of this drawing for any purpose other than as originally intended.	DRAWN <b>J.CHRISTISON</b>	DATE <b>20/02/23</b>	TITLE <b>PERTH INTERNATIONAL AIRPORT          PANS-OPS COMBINED CRITICAL SURFACES          EXISTING 2 RUNWAYS - 15KM</b>
	AIRPORT <b>PERTH INTERNATIONAL AIRPORT (YPPH)</b>			CHECKED <b>R.ROMANO</b>	DATE <b>20/02/23</b>	
PROJECT <b>2023 PRESCRIBED AIRSPACE</b>		PREPARED BY <b>AV3D</b>		APPROVALS <b>J.CHRISTISON</b>		DATUM <b>GDA94-50</b>
				SCALE <b>1:100,000</b>	DRAWING No <b>PPH-2RWY-EXI-PANS-3</b>	SHEET <b>3 OF 7</b>
						REV <b>3</b>



**NOTES:**

- 1) HP = HORIZONTAL PLANE
- 2) ANNOTATED HEIGHTS INDICATE THE LOWEST CRITICAL SURFACE ELEVATION OF THE PANS-OPS PROTECTION SURFACE IN METRES (AHD)
- 3) CONTOUR INTERVALS 10m
- 4) GRID REFERENCE WGS84
- 5) REFER TO THE REFERENCE DRAWING NOTED FOR INNER CONTOUR DETAIL

**LEGEND:**

- PRECISION APPROACH
- NON-PRECISION APPROACH
- MISSED APPROACH
- STANDARD ARRIVAL
- DEPARTURE
- CIRCLING
- MSA
- XX km- DISTANCE FROM AERODROME REFERENCE POINT (ARP)
- 50m CONTOURS

0 500 1000 1500m  
SCALE 1:30,000 ON A3

The surface construction shown in this document is in accordance with the standards defined in:

- 1) ICAO Procedures for Air Navigation - Air Operations, Doc 8168-OPS/611, Volume II - Construction of Visual and Instrument Flight Procedures.
- 2) ICAO Required Navigation Performance Authorization Required Procedure Design Manual, Doc 9905-AN/471.
- 3) ICAO Procedures for Air Navigation Services - Air Traffic Management (PANS-ATM) (Doc 4444).
- 4) ICAO Annex 10 Aeronautical Telecommunications, Volume II Communications Procedures.
- 5) CASA Manual of Standards - Part 172 - Air Traffic Services.
- 6) CASA Manual of Standards - Part 173 - Standards Applicable to Instrument Flight Procedure Design.

*Ray Romano*  
Ray Romano  
Date: 20/02/23

REV	DATE	DESIGN	CHKD	APPR	AMENDMENT
3	17/10/23	AsA	RR	JC	NEW RNAV-Z RWY 24 (VNAV), RTCC REMOVED
2	17/03/23	AsA	RR	JC	REVISED RNAV-X (RNP) RWY 03
1	20/02/23	AsA	RR	JC	INITIAL RELEASE

**Perth Airport**  
Level 2, 2 George Wicken Drive  
Perth Airport WA 6105  
AUSTRALIA

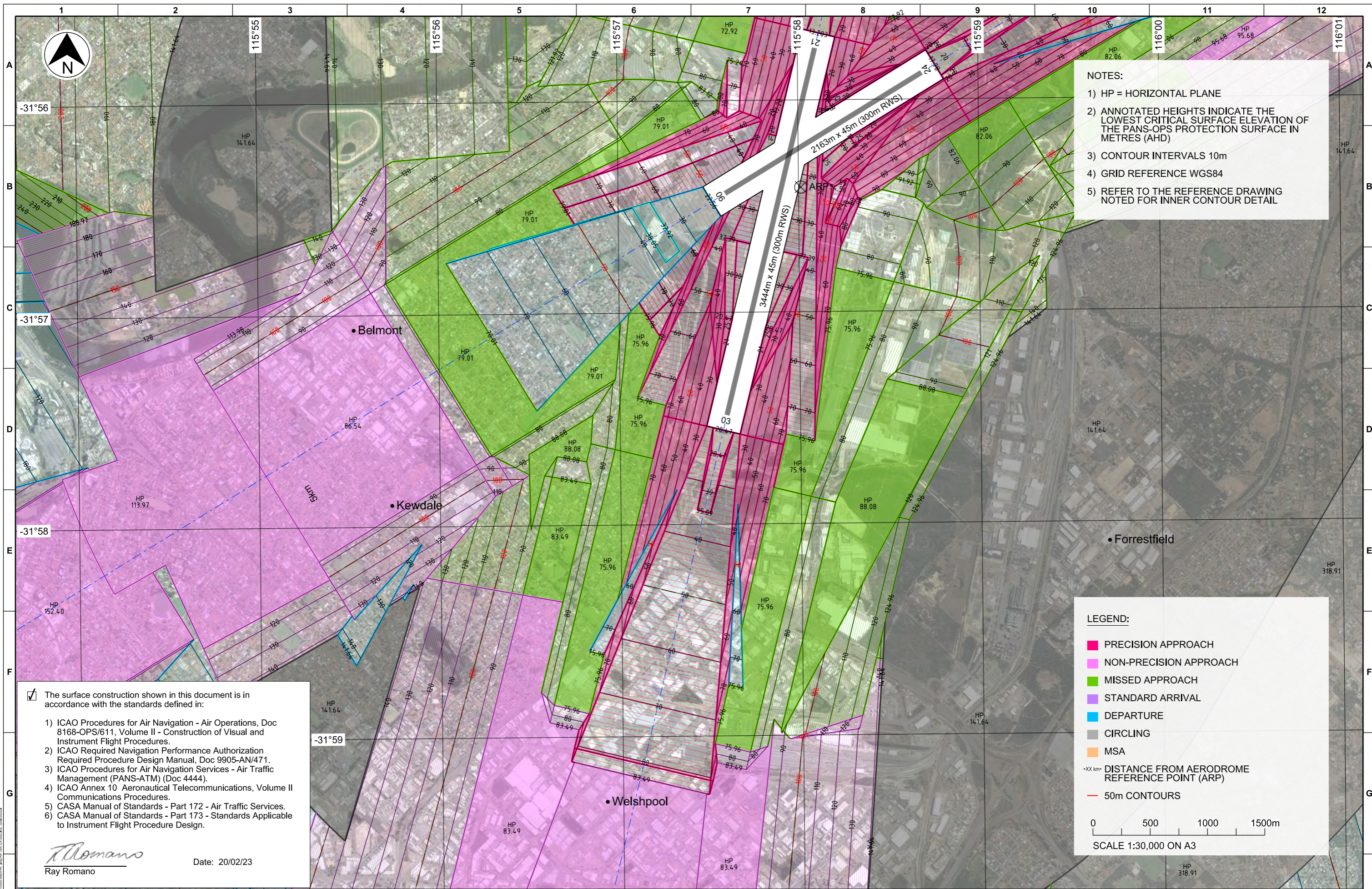
CLIENT  
PERTH AIRPORT PTY. LTD.  
AIRPORT  
PERTH INTERNATIONAL AIRPORT (YPPH)  
PROJECT  
2023 PRESCRIBED AIRSPACE

PREPARED BY  
**AV3D**  
AV3D PTY. LTD. WWW.AV3D.COM.AU

COPYRIGHT  
This drawing is protected by copyright and no part of this drawing may be reproduced in any form without the prior written permission from AV3D Pty Ltd.  
AV3D Pty Ltd does not provide any warranties and accepts no liability arising out of the use of this drawing for any purpose other than originally intended.

DRAWN	CHECKED	APPROVED	DATE
J.CHRISTISON	R.ROMANO	J.CHRISTISON	20/02/23

TITLE		DATUM	SCALE	DRAWING No	SHEET	REV
PERTH INTERNATIONAL AIRPORT PANS-OPS COMBINED CRITICAL SURFACES EXISTING 2 RUNWAYS - AIRPORT NORTH		GDA94-50	1:30,000	PPH-2RWY-EXI-PANS-4	4 OF 7	3



**NOTES:**

- 1) HP = HORIZONTAL PLANE
- 2) ANNOTATED HEIGHTS INDICATE THE LOWEST CRITICAL SURFACE ELEVATION OF THE PANS-OPS PROTECTION SURFACE IN METRES (AHD)
- 3) CONTOUR INTERVALS 10m
- 4) GRID REFERENCE WGS84
- 5) REFER TO THE REFERENCE DRAWING NOTED FOR INNER CONTOUR DETAIL

**LEGEND:**

- PRECISION APPROACH
- NON-PRECISION APPROACH
- MISSED APPROACH
- STANDARD ARRIVAL
- DEPARTURE
- CIRCLING
- MSA
- XX km- DISTANCE FROM AERODROME REFERENCE POINT (ARP)
- 50m CONTOURS

0 500 1000 1500m  
SCALE 1:30,000 ON A3

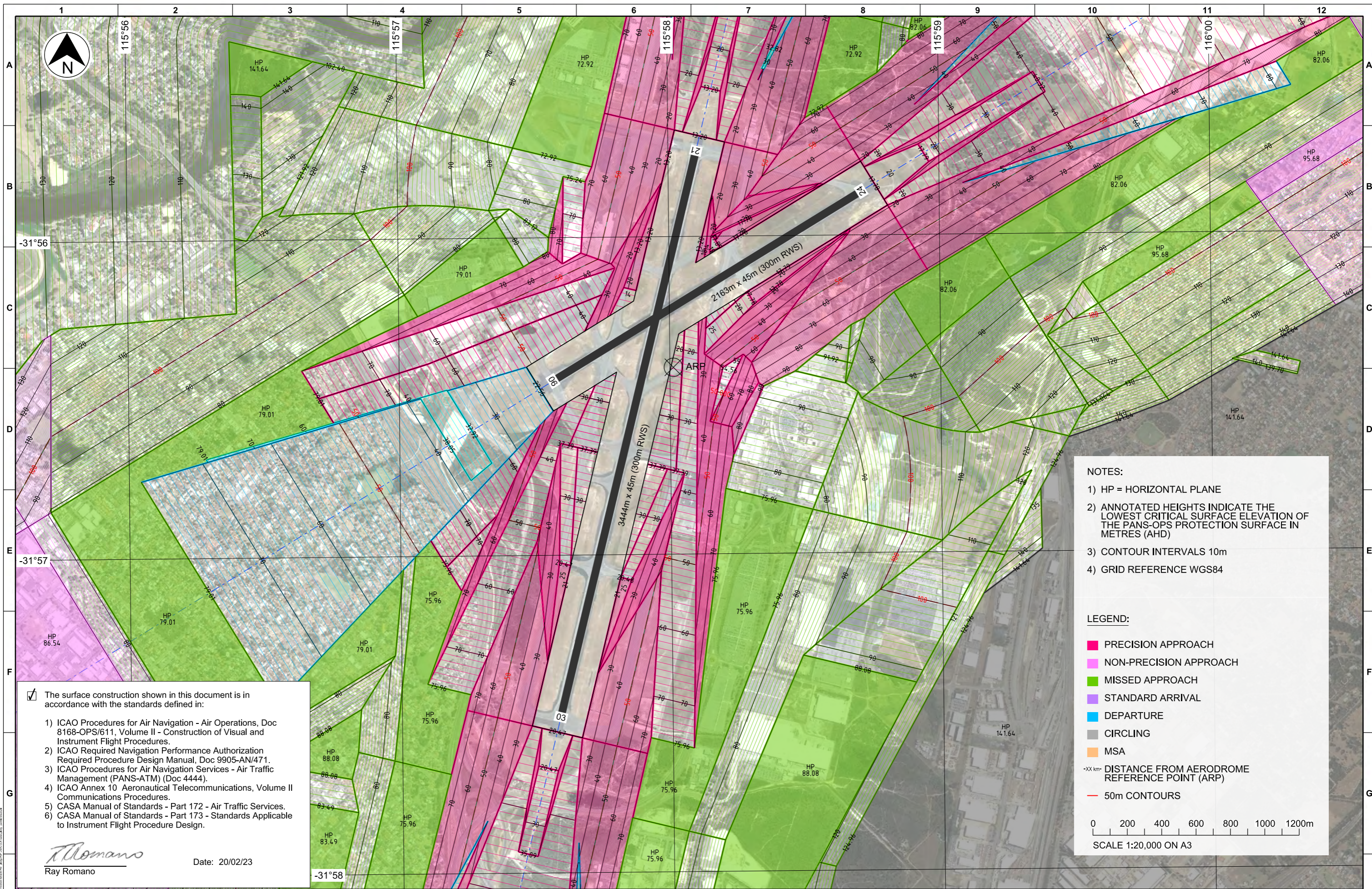
The surface construction shown in this document is in accordance with the standards defined in:

- 1) ICAO Procedures for Air Navigation - Air Operations, Doc 8168-OPS/611, Volume II - Construction of Visual and Instrument Flight Procedures.
- 2) ICAO Required Navigation Performance Authorization Required Procedure Design Manual, Doc 9905-AN/471.
- 3) ICAO Procedures for Air Navigation Services - Air Traffic Management (PANS-ATM) (Doc 4444).
- 4) ICAO Annex 10 Aeronautical Telecommunications, Volume II Communications Procedures.
- 5) CASA Manual of Standards - Part 172 - Air Traffic Services.
- 6) CASA Manual of Standards - Part 173 - Standards Applicable to Instrument Flight Procedure Design.

*Ray Romano*  
Ray Romano  
Date: 20/02/23

REV	DATE	DESIGN	CHKD	APPR	AMENDMENT
3	17/10/23	AsA	RR	JC	NEW RNAV-Z RWY 24 (VNAV), RTCC REMOVED
2	17/03/23	AsA	RR	JC	REVISED RNAV-X (RNP) RWY 03
1	20/02/23	AsA	RR	JC	INITIAL RELEASE

 Level 2, 2 George Wenecke Drive Perth Airport WA 6105 AUSTRALIA	CLIENT <b>PERTH AIRPORT PTY. LTD.</b>	 AV3D PTY. LTD. WWW.AV3D.COM.AU	COPYRIGHT This drawing is protected by copyright and no part of this drawing may be reproduced in any form without the prior written permission from AV3D Pty Ltd. AV3D Pty Ltd does not provide any warranties and accepts no liability arising out of the use of this drawing for any purpose other than originally intended.	DRAWN <b>J.CHRISTISON</b>	DATE <b>20/02/23</b>	TITLE <b>PERTH INTERNATIONAL AIRPORT PANS-OPS COMBINED CRITICAL SURFACES EXISTING 2 RUNWAYS - AIRPORT SOUTH</b>			
	AIRPORT <b>PERTH INTERNATIONAL AIRPORT (YPPH)</b>			CHECKED <b>R.ROMANO</b>	DATE <b>20/02/23</b>		APPROVED <b>J.CHRISTISON</b>	DATE <b>20/02/23</b>	DATUM <b>GDA94-50</b>



The surface construction shown in this document is in accordance with the standards defined in:

- 1) ICAO Procedures for Air Navigation - Air Operations, Doc 8168-OPS/611, Volume II - Construction of Visual and Instrument Flight Procedures.
- 2) ICAO Required Navigation Performance Authorization Required Procedure Design Manual, Doc 9905-AN/471.
- 3) ICAO Procedures for Air Navigation Services - Air Traffic Management (PANS-ATM) (Doc 4444).
- 4) ICAO Annex 10 Aeronautical Telecommunications, Volume II Communications Procedures.
- 5) CASA Manual of Standards - Part 172 - Air Traffic Services.
- 6) CASA Manual of Standards - Part 173 - Standards Applicable to Instrument Flight Procedure Design.

*Ray Romano*  
 Ray Romano Date: 20/02/23

**NOTES:**

- 1) HP = HORIZONTAL PLANE
- 2) ANNOTATED HEIGHTS INDICATE THE LOWEST CRITICAL SURFACE ELEVATION OF THE PANS-OPS PROTECTION SURFACE IN METRES (AHD)
- 3) CONTOUR INTERVALS 10m
- 4) GRID REFERENCE WGS84

**LEGEND:**

- PRECISION APPROACH
- NON-PRECISION APPROACH
- MISSED APPROACH
- STANDARD ARRIVAL
- DEPARTURE
- CIRCLING
- MSA

-XX km- DISTANCE FROM AERODROME REFERENCE POINT (ARP)

— 50m CONTOURS

0 200 400 600 800 1000 1200m  
 SCALE 1:20,000 ON A3

REV	DATE	DESIGN	CHKD	APPR	AMENDMENT
3	17/10/23	AsA	RR	JC	NEW RNAV-Z RWY 24 (VNAV), RTCC REMOVED
2	17/03/23	AsA	RR	JC	REVISED RNAV-X (RNP) RWY 03
1	20/02/23	AsA	RR	JC	INITIAL RELEASE

**Perth Airport**  
 Level 2, 2 George Waince Drive  
 Perth Airport WA 6105  
 AUSTRALIA

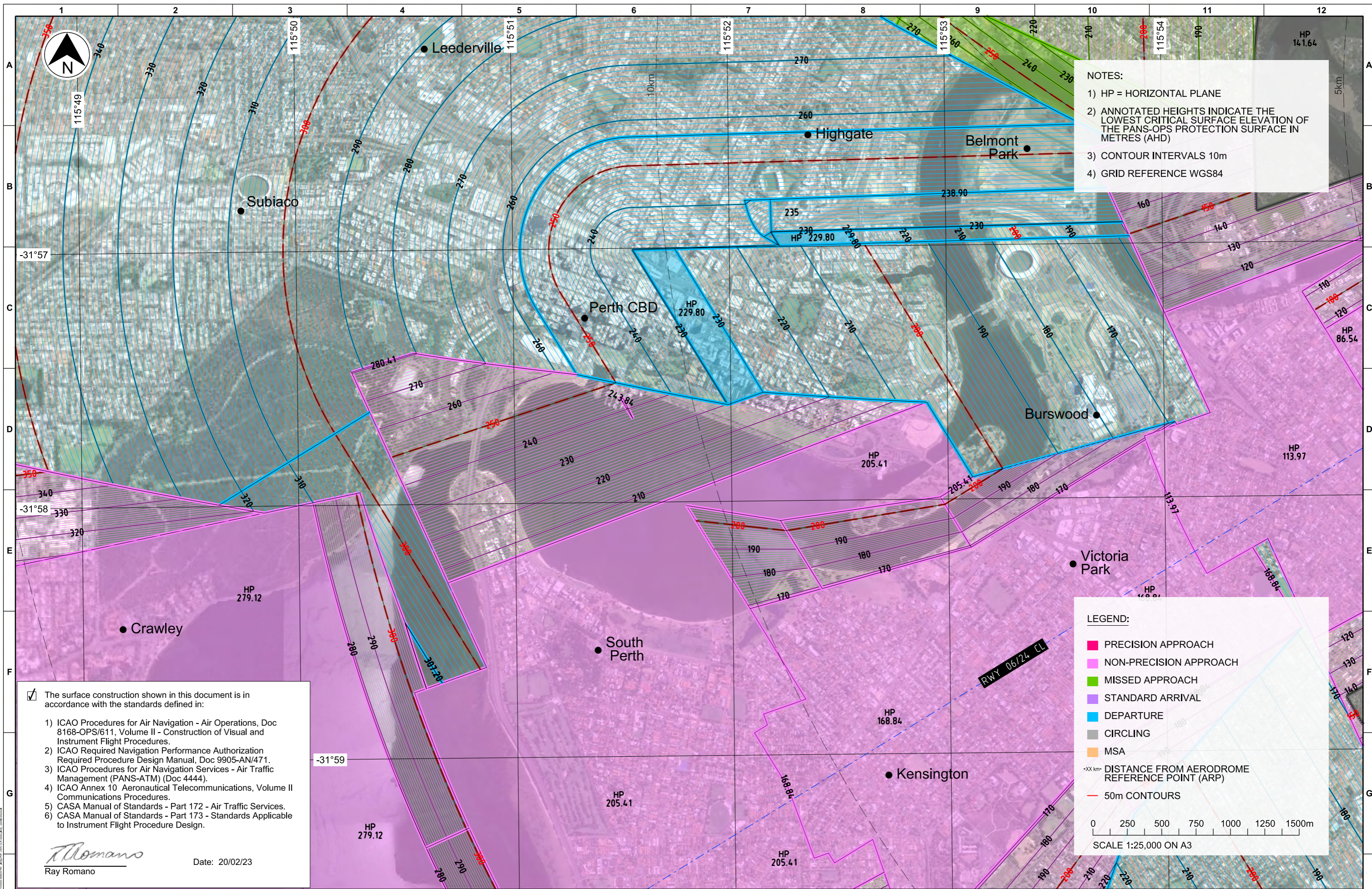
CLIENT  
 PERTH AIRPORT PTY. LTD.  
 AIRPORT  
 PERTH INTERNATIONAL AIRPORT (YPPH)  
 PROJECT  
 2023 PRESCRIBED AIRSPACE

PREPARED BY  
  
 AV3D PTY. LTD. WWW.AV3D.COM.AU

COPYRIGHT  
 This drawing is protected by copyright and no part of this drawing may be reproduced in any form without the prior written permission from AV3D Pty Ltd.  
 AV3D Pty Ltd does not provide any warranties and accepts no liability arising out of the use of this drawing for any purpose other than originally intended.

DRAWN		APPROVALS	
J.CHRISTISON	DATE 20/02/23	J.CHRISTISON	DATE 20/02/23
R.ROMANO	DATE 20/02/23		

TITLE			
PERTH INTERNATIONAL AIRPORT PANS-OPS COMBINED CRITICAL SURFACES EXISTING 2 RUNWAYS - AIRPORT			
DATUM GDA94-50	SCALE 1:20,000	DRAWING No PPH-2RWY-EXI-PANS-6	SHEET 6 OF 7
			REV 3



**NOTES:**

- 1) HP = HORIZONTAL PLANE
- 2) ANNOTATED HEIGHTS INDICATE THE LOWEST CRITICAL SURFACE ELEVATION OF THE PANS-OPS PROTECTION SURFACE IN METRES (AHD)
- 3) CONTOUR INTERVALS 10m
- 4) GRID REFERENCE WGS84

**LEGEND:**

- PRECISION APPROACH
- NON-PRECISION APPROACH
- MISSED APPROACH
- STANDARD ARRIVAL
- DEPARTURE
- CIRCLING
- MSA

-XX km - DISTANCE FROM AERODROME REFERENCE POINT (ARP)

— 50m CONTOURS

0 250 500 750 1000 1250 1500m

SCALE 1:25,000 ON A3

The surface construction shown in this document is in accordance with the standards defined in:

- 1) ICAO Procedures for Air Navigation - Air Operations, Doc 8168-OPS/611, Volume II - Construction of Visual and Instrument Flight Procedures.
- 2) ICAO Required Navigation Performance Authorization Required Procedure Design Manual, Doc 9905-AN/471.
- 3) ICAO Procedures for Air Navigation Services - Air Traffic Management (PANS-ATM) (Doc 4444).
- 4) ICAO Annex 10 Aeronautical Telecommunications, Volume II Communications Procedures.
- 5) CASA Manual of Standards - Part 172 - Air Traffic Services.
- 6) CASA Manual of Standards - Part 173 - Standards Applicable to Instrument Flight Procedure Design.

*Ray Romano*  
Ray Romano

Date: 20/02/23

REV	DATE	DESIGN	CHKD	APPR	AMENDMENT
3	17/10/23	AsA	RR	JC	NEW RNAV-Z RWY 24 (VNAV), RTCC REMOVED
2	17/03/23	AsA	RR	JC	REVISED RNAV-X (RNP) RWY 03
1	20/02/23	AsA	RR	JC	INITIAL RELEASE

<p>Level 2, 2 George Wrencke Drive Perth Airport WA 6105 AUSTRALIA</p>	<p>CLIENT PERTH AIRPORT PTY. LTD.</p>	<p>AV3D PTY. LTD. WWW.AV3D.COM.AU</p>	<p>COPYRIGHT</p> <p>This drawing is protected by copyright and no part of this drawing may be reproduced in any form without the prior written permission from AV3D Pty Ltd.</p> <p>AV3D Pty Ltd does not provide any warranties and accepts no liability arising out of the use of this drawing for any purpose other than originally intended.</p>	<p>DRAWN J.CHRISTISON</p>	<p>DATE 20/02/23</p>	<p>TITLE PERTH INTERNATIONAL AIRPORT PANS-OPS COMBINED CRITICAL SURFACES EXISTING 2 RUNWAYS - CBD &amp; SURROUNDS</p>			
	<p>AIRPORT PERTH INTERNATIONAL AIRPORT (YPPH)</p>			<p>CHECKED R.ROMANO</p>	<p>DATE 20/02/23</p>		<p>APPROVED J.CHRISTISON</p>	<p>DATE 20/02/23</p>	<p>DATUM GDA94-50</p>