

CASA MANUAL OF STANDARDS PART 139 - AERODROMES
OBSTACLE RESTRICTION AND LIMITATION SURFACES TABLE OF VALUES

PERTH INTERNATIONAL AIRPORT (YPPH)

RUNWAY 03L/21R - 3800 x 45m (300m RWS)
 RUNWAY 03R/21L - 3000 x 45m (300m RWS)
 RUNWAY 06/24 - 3000 x 45m (300m RWS)

AIRPORT	
ARP ELEVATION	REFERENCE ELEV DATUM
16.037	19.0

HORIZONTAL SURFACES					
OUTER HORIZONTAL ELEV	OUTER HORIZONTAL HEIGHT	OUTER HORIZONTAL RADIUS	INNER HORIZONTAL ELEV	INNER HORIZONTAL HEIGHT	INNER HORIZONTAL RADIUS
169.00	150	15000	64.00	45	4,000

APPROACH SURFACES												
RWY	CODE	INSTR. TYPE	INNER EDGE ELEV	LENGTH OF INNER EDGE	DIST FM THR	DIVERGENCE EACH SIDE	FIRST SECTION		SECOND SECTION		TOTAL LENGTH	
							LENGTH	SLOPE	LENGTH	SLOPE		
03L	4	CAT I	20,478	300	60	15%	3,000	2%	3,600	2.5%	8,400	15,000
21R	4	CAT IIIB	12,700	300	60	15%	3,000	2%	3,600	2.5%	8,400	15,000
03R	4	CAT I	22,500	300	60	15%	3,000	2%	3,600	2.5%	8,400	15,000
21L	4	CAT IIIB	23,100	300	60	15%	3,000	2%	3,600	2.5%	8,400	15,000
06	4	CAT I	17,682	300	60	15%	3,000	2%	3,600	2.5%	8,400	15,000
24	4	CAT I	18,300	300	60	15%	3,000	2%	3,600	2.5%	8,400	15,000

TRANSITIONAL SURFACES		
RUNWAY	CODE	SLOPE
03L	4	14.3%
21R	4	14.3%
03R	4	14.3%
21L	4	14.3%
06	4	14.3%
24	4	14.3%

TAKE-OFF CLIMB SURFACES									
RUNWAY	CODE	INNER EDGE ELEVATION	LENGTH OF INNER EDGE	DISTANCE FM RWY END	DIVERGENCE EACH SIDE	OVERALL LENGTH	FINAL WIDTH	SLOPE	
03L	4	12,700	180	60	12.5%	15,000	1,800	2%	
21R	4	20,702	180	60	12.5%	15,000	1,800	2%	
03R	4	23,100	180	60	12.5%	15,000	1,800	2%	
21L	4	22,500	180	60	12.5%	15,000	1,800	2%	
06	4	18,300	180	60	12.5%	15,000	1,800	2%	
24	4	17,682	180	60	12.5%	15,000	1,800	2%	

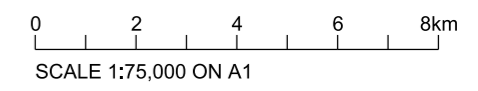
- LEGEND:
- OUTER HORIZONTAL SURFACE
 - INNER HORIZONTAL SURFACE
 - CONICAL SURFACE
 - TAKE-OFF SURFACE
 - APPROACH SURFACE
 - TRANSITIONAL SURFACE

- NOTES:
- 1) UNIT DISTANCES AND LENGTHS SHOWN IN METRES (m)
 - 2) UNIT DATUM AND ELEVATIONS SHOWN IN METRES (m) AHD
 - 3) CONTOUR INTERVALS MAJOR 10m
 - 4) HP = HORIZONTAL PLANE
 - 5) GRID REFERENCE WGS84
 - 6) THE AIRPORT IS MAINTAINING 300m WIDE RWS IN THE INTEREST OF SAFEGUARDING AT THIS STAGE. THE CHANGE TO A 280m WIDE RWS WILL BE IMPLEMENTED IN THE FUTURE AS PART OF A MANAGED PROCESS THAT INCORPORATES ALL OF THE REGULATORY IMPLICATIONS BEYOND THE DECLARING OF AIRSPACE.

The surface construction shown in this document is in accordance with the standards defined in:

- 1) ICAO Annex 14 - Aerodromes - Vol I - Aerodrome Design and Operations

Ray Romano
Ray Romano
Date: 20/02/23



211077 YPPH File: PPH-3RWY-ULT-OLS-01.dgn Model: Default Plotted: 17/04/2023 4:15:59 PM Plot: PDF - 50% CLR raster, plot: penlab.txt, sub.tbl

REV	DATE	DESIGN	CHKD	APPR	AMENDMENT
2	17/04/23	JC	MC	JC	REVISED DESIGN STANDARD STAMP
1	20/02/23	JC	RR	JC	INITIAL RELEASE

Perth Airport
 Level 2, 2 George Wlencke Drive
 Perth Airport WA 6105
 AUSTRALIA

CLIENT
PERTH AIRPORT PTY. LTD.
 AIRPORT
PERTH INTERNATIONAL AIRPORT (YPPH)
 PROJECT
2023 PRESCRIBED AIRSPACE

PREPARED BY

AV3D
 AV3D PTY. LTD. WWW.AV3D.COM.AU

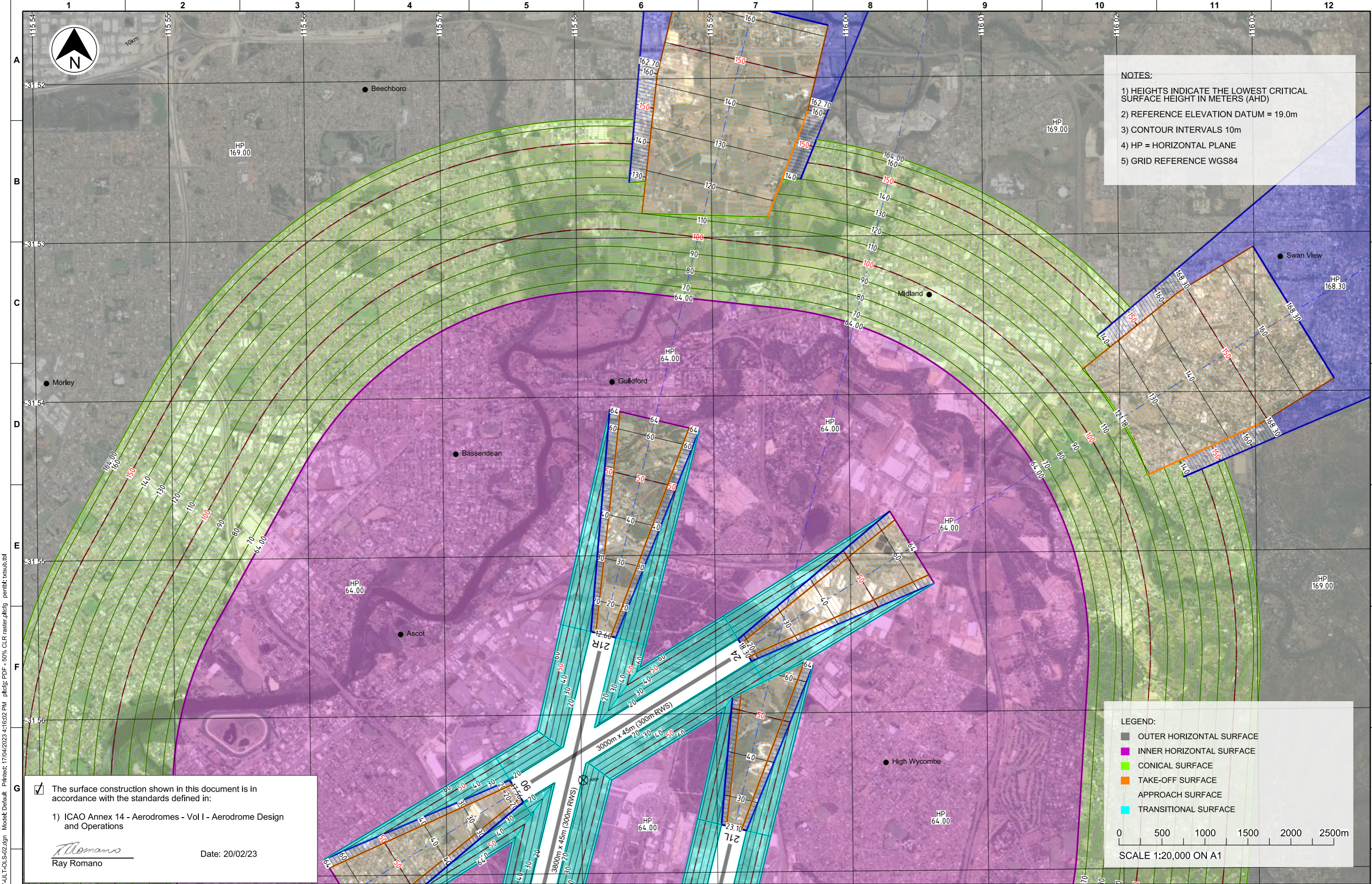
COPYRIGHT
 This drawing is protected by copyright and no part of this drawing may be reproduced in any form without the prior written permission from AV3D Pty Ltd.
 AV3D Pty Ltd does not provide any warranties and accepts no liability arising out of the use of this drawing for any purpose other than originally intended.

APPROVALS

DRAWN J. CHRISTISON	DATE 20/02/23
CHECKED R. ROMANO	DATE 20/02/23
APPROVED J. CHRISTISON	DATE 20/02/23

TITLE
**PERTH INTERNATIONAL AIRPORT
 OBSTACLE LIMITATION SURFACES (OLS)
 FUTURE 3 RWYS (ULTIMATE)**

DATUM GDA94-50	SCALE 1:75,000	DRAWING No PPH-3RWY-ULT-OLS-01	SHEET 1 OF 4	REV 2
-------------------	-------------------	-----------------------------------	-----------------	----------



NOTES:

- 1) HEIGHTS INDICATE THE LOWEST CRITICAL SURFACE HEIGHT IN METERS (AHD)
- 2) REFERENCE ELEVATION DATUM = 19.0m
- 3) CONTOUR INTERVALS 10m
- 4) HP = HORIZONTAL PLANE
- 5) GRID REFERENCE WGS84

LEGEND:

- OUTER HORIZONTAL SURFACE
- INNER HORIZONTAL SURFACE
- CONICAL SURFACE
- TAKE-OFF SURFACE
- APPROACH SURFACE
- TRANSITIONAL SURFACE

0 500 1000 1500 2000 2500m
SCALE 1:20,000 ON A1

The surface construction shown in this document is in accordance with the standards defined in:

- 1) ICAO Annex 14 - Aerodromes - Vol I - Aerodrome Design and Operations

Ray Romano
Ray Romano
Date: 20/02/23

211077 YPPH File: PPH-3RWY-ULT-OLS-02.dgn Model: Default Printed: 17/04/2023 4:16:02 PM Plot: PDF - 50% CLR raster/ptfig penlab: txtsub.tbl

REV	DATE	DESIGN	CHKD	APPR	AMENDMENT
2	17/04/23	JC	MC	JC	REVISED DESIGN STANDARD STAMP
1	20/02/23	JC	RR	JC	INITIAL RELEASE

Perth Airport
Level 2, 2 George Wlencke Drive
Perth Airport WA 6105
AUSTRALIA

CLIENT
PERTH AIRPORT PTY. LTD.

AIRPORT
PERTH INTERNATIONAL AIRPORT (YPPH)

PROJECT
2023 PRESCRIBED AIRSPACE

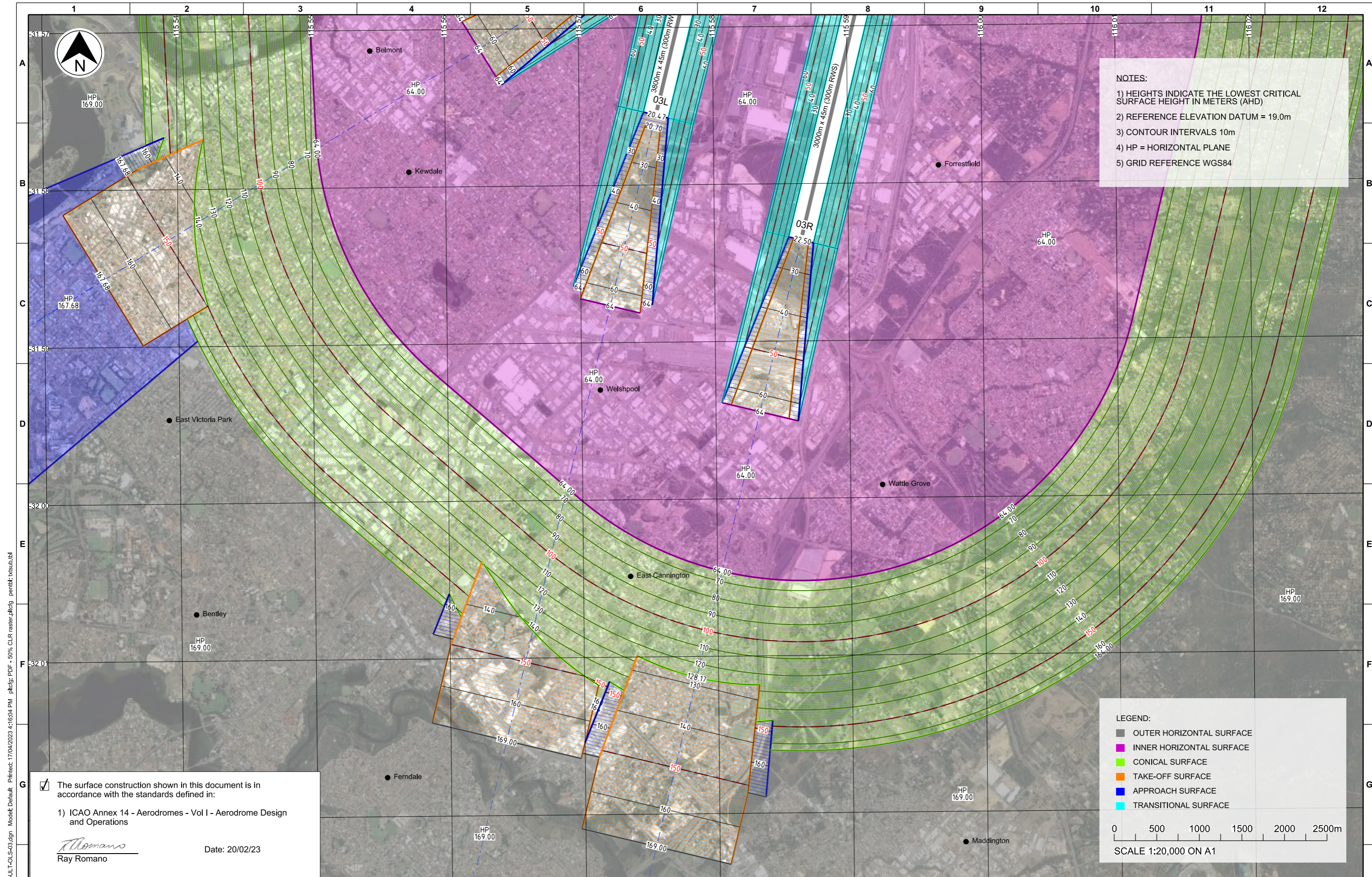
PREPARED BY
AV3D

AV3D PTY. LTD. WWW.AV3D.COM.AU

COPYRIGHT
This drawing is protected by copyright and no part of this drawing may be reproduced in any form without the prior written permission from AV3D Pty Ltd.
AV3D Pty Ltd does not provide any warranties and accepts no liability arising out of the use of this drawing for any purpose other than originally intended.

DRAWN	CHECKED	APPROVED	DATE
J.CHRISTISON	R.ROMANO	J.CHRISTISON	20/02/23

TITLE	DATUM	SCALE	DRAWING No	SHEET	REV
PERTH INTERNATIONAL AIRPORT OBSTACLE LIMITATION SURFACES (OLS) FUTURE 3 RWYS (ULTIMATE) - NORTH	GDA94-50	1:20,000	PPH-3RWY-ULT-OLS-02	2 OF 4	2



NOTES:

- 1) HEIGHTS INDICATE THE LOWEST CRITICAL SURFACE HEIGHT IN METERS (AHD)
- 2) REFERENCE ELEVATION DATUM = 19.0m
- 3) CONTOUR INTERVALS 10m
- 4) HP = HORIZONTAL PLANE
- 5) GRID REFERENCE WGS84

The surface construction shown in this document is in accordance with the standards defined in:

- 1) ICAO Annex 14 - Aerodromes - Vol I - Aerodrome Design and Operations

Ray Romano
Ray Romano
Date: 20/02/23

LEGEND:

- OUTER HORIZONTAL SURFACE
- INNER HORIZONTAL SURFACE
- CONICAL SURFACE
- TAKE-OFF SURFACE
- APPROACH SURFACE
- TRANSITIONAL SURFACE

0 500 1000 1500 2000 2500m
SCALE 1:20,000 ON A1

211077 YPPH File: PPH-3RWY-ULT-OLS-03.dgn Model: Default Printed: 17/04/2023 4:16:04 PM plctg: PDF - 50% CLR raster:plctg penlab:txt:tbl.tbl

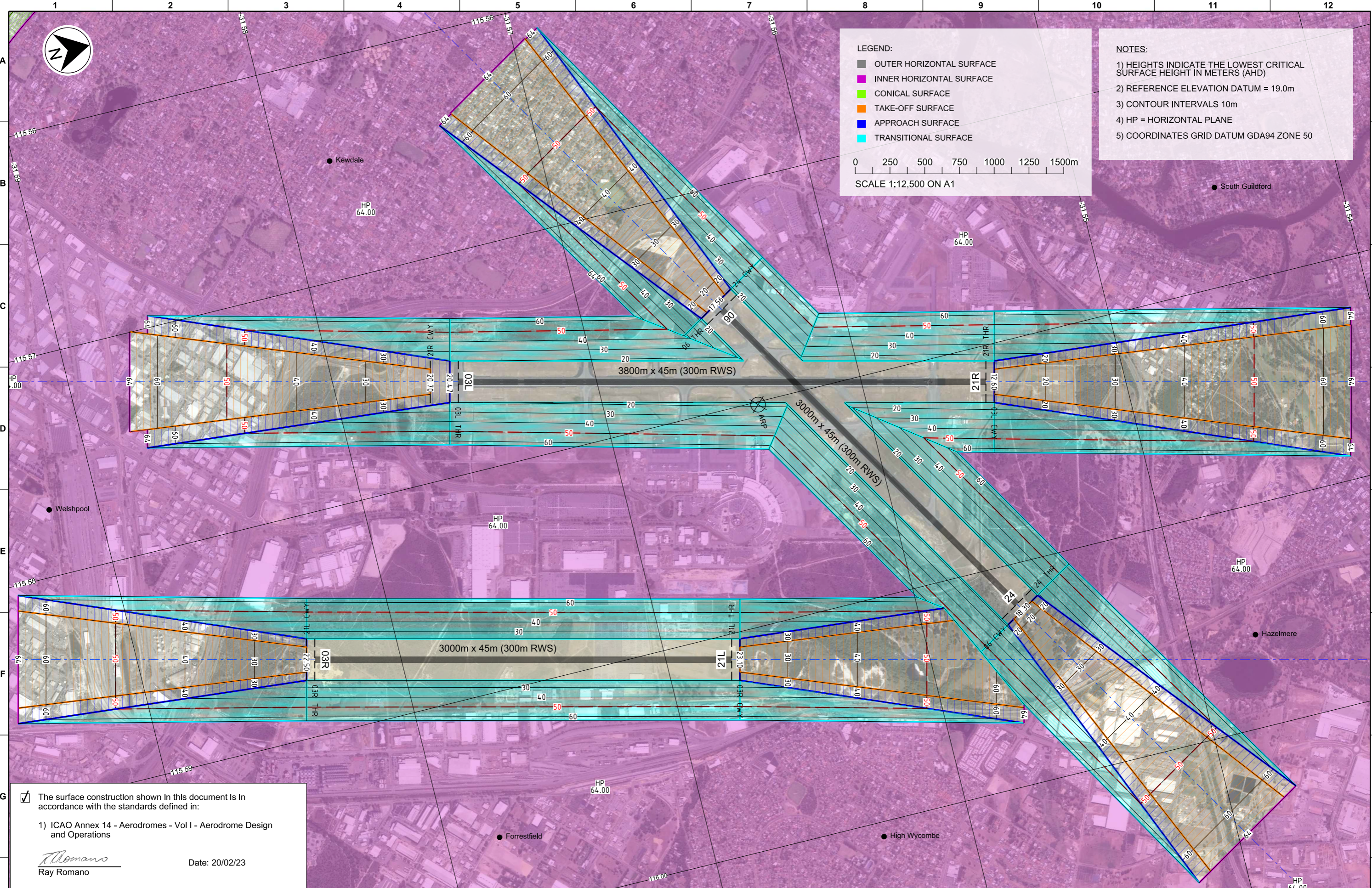
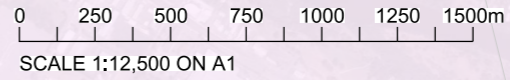
REV	DATE	DESIGN	CHKD	APPR	AMENDMENT
2	17/04/23	JC	MC	JC	REVISED DESIGN STANDARD STAMP
1	20/02/23	JC	RR	JC	INITIAL RELEASE

<p>Level 2, 2 George Wrencke Drive Perth Airport WA 6105 AUSTRALIA</p>	<p>CLIENT PERTH AIRPORT PTY. LTD.</p>	<p>AV3D PTY. LTD. WWW.AV3D.COM.AU</p>	<p>COPYRIGHT This drawing is protected by copyright and no part of this drawing may be reproduced in any form without the prior written permission from AV3D Pty Ltd. AV3D Pty Ltd does not provide any warranties and accepts no liability arising out of the use of this drawing for any purpose other than originally intended.</p>	<p>DRAWN J.CHRISTISON</p>	<p>DATE 20/02/23</p>	<p>TITLE PERTH INTERNATIONAL AIRPORT OBSTACLE LIMITATION SURFACES (OLS) FUTURE 3 RWYS (ULTIMATE) - SOUTH</p>				
	<p>AIRPORT PERTH INTERNATIONAL AIRPORT (YPPH)</p>			<p>CHECKED R.ROMANO</p>	<p>DATE 20/02/23</p>		<p>APPROVED J.CHRISTISON</p>	<p>DATE 20/02/23</p>		
<p>PROJECT 2023 PRESCRIBED AIRSPACE</p>		<p>PREPARED BY</p>		<p>APPROVALS</p>		<p>DATUM GDA94-50</p>	<p>SCALE 1:20,000</p>	<p>DRAWING No PPH-3RWY-ULT-OLS-03</p>	<p>SHEET 3 OF 4</p>	<p>REV 2</p>



- LEGEND:**
- OUTER HORIZONTAL SURFACE
 - INNER HORIZONTAL SURFACE
 - CONICAL SURFACE
 - TAKE-OFF SURFACE
 - APPROACH SURFACE
 - TRANSITIONAL SURFACE

- NOTES:**
- 1) HEIGHTS INDICATE THE LOWEST CRITICAL SURFACE HEIGHT IN METERS (AHD)
 - 2) REFERENCE ELEVATION DATUM = 19.0m
 - 3) CONTOUR INTERVALS 10m
 - 4) HP = HORIZONTAL PLANE
 - 5) COORDINATES GRID DATUM GDA94 ZONE 50



The surface construction shown in this document is in accordance with the standards defined in:

- 1) ICAO Annex 14 - Aerodromes - Vol I - Aerodrome Design and Operations

Ray Romano
Ray Romano
Date: 20/02/23

211077 YPPH File: PPH-3RWY-ULT-OLS-04.dgn Model: Default Printset: 17/04/2023 4:16:06 PM Plot: PDF - 50% CLR raster.plt: g:\penlab\... .tbl

REV	DATE	DESIGN	CHKD	APPR	AMENDMENT
2	17/04/23	JC	MC	JC	REVISED DESIGN STANDARD STAMP
1	20/02/23	JC	RR	JC	INITIAL RELEASE

 Level 2, 2 George Wrencke Drive Perth Airport WA 6105 AUSTRALIA	CLIENT PERTH AIRPORT PTY. LTD. AIRPORT PERTH INTERNATIONAL AIRPORT (YPPH) PROJECT 2023 PRESCRIBED AIRSPACE	PREPARED BY AV3D AV3D PTY. LTD. WWW.AV3D.COM.AU	COPYRIGHT This drawing is protected by copyright and no part of this drawing may be reproduced in any form without the prior written permission from AV3D Pty Ltd. AV3D Pty Ltd does not provide any warranties and accepts no liability arising out of the use of this drawing for any purpose other than originally intended.	APPROVALS <table border="1"> <tr> <td>DRAWN</td> <td>J.CHRISTISON</td> <td>DATE</td> <td>20/02/23</td> </tr> <tr> <td>CHECKED</td> <td>R.ROMANO</td> <td>DATE</td> <td>20/02/23</td> </tr> <tr> <td>APPROVED</td> <td>J.CHRISTISON</td> <td>DATE</td> <td>20/02/23</td> </tr> </table>	DRAWN	J.CHRISTISON	DATE	20/02/23	CHECKED	R.ROMANO	DATE	20/02/23	APPROVED	J.CHRISTISON	DATE	20/02/23	TITLE PERTH INTERNATIONAL AIRPORT OBSTACLE LIMITATION SURFACES (OLS) FUTURE 3 RWYS (ULTIMATE) - AIRPORT DATUM GDA94-50 SCALE 1:12,500 DRAWING No PPH-3RWY-ULT-OLS-04 SHEET 4 OF 4 REV 2
	DRAWN	J.CHRISTISON	DATE	20/02/23													
CHECKED	R.ROMANO	DATE	20/02/23														
APPROVED	J.CHRISTISON	DATE	20/02/23														