

CASA MANUAL OF STANDARDS PART 139 - AERODROMES
OBSTACLE RESTRICTION AND LIMITATION SURFACES TABLE OF VALUES

PERTH INTERNATIONAL AIRPORT (YPPH)

RUNWAY 03/21 - 3444 x 45m (300m RWS)

RUNWAY 06/24 - 2163 x 45m (300m RWS)

AIRPORT	
ARP ELEVATION	REFERENCE ELEV DATUM
16.037	19.0

HORIZONTAL SURFACES					
OUTER HORIZONTAL ELEV	OUTER HORIZONTAL HEIGHT	OUTER HORIZONTAL RADIUS	INNER HORIZONTAL ELEV	INNER HORIZONTAL HEIGHT	INNER HORIZONTAL RADIUS
169.00	150	15000	64.00	45	4,000

APPROACH SURFACES												
RWY	CODE	INSTR. TYPE	INNER EDGE ELEV	LENGTH OF INNER EDGE	DIST FM THR	DIVERGENCE EACH SIDE	FIRST SECTION		SECOND SECTION		TOTAL LENGTH	
							LENGTH	SLOPE	LENGTH	SLOPE		
03	4	CAT I	20.478	300	60	15%	3,000	2%	3,600	2.5%	8,400	15,000
21	4	CAT IIIB	13,203	300	60	15%	3,000	2%	3,600	2.5%	8,400	15,000
06	4	INSTR	17.682	300	60	15%	3,000	2%	3,600	2.5%	8,400	15,000
24	4	CAT I	17.789	300	60	15%	3,000	2%	3,600	2.5%	8,400	15,000

TRANSITIONAL SURFACES		
RUNWAY	CODE	SLOPE
03	4	14.3%
21	4	14.3%
06	4	14.3%
24	4	14.3%

TAKE-OFF CLIMB SURFACES									
RUNWAY	CODE	INNER EDGE ELEVATION	LENGTH OF INNER EDGE	DISTANCE FM RWY END	DIVERGENCE EACH SIDE	OVERALL LENGTH	FINAL WIDTH	SLOPE	
03	4	13,203	180	60	12.5%	15,000	1,800	2%	
21	4	20,702	180	60	12.5%	15,000	1,800	2%	
06	4	17,975	180	60	12.5%	15,000	1,800	2%	
24	4	17,682	180	60	12.5%	15,000	1,800	2%	

NOTES:

- UNIT DISTANCES AND LENGTHS SHOWN IN METRES (m)
- UNIT DATUM AND ELEVATIONS SHOWN IN METRES (m) AHD
- CONTOUR INTERVALS MAJOR 10m
- HP = HORIZONTAL PLANE
- GRID REFERENCE WGS84
- THE AIRPORT IS MAINTAINING 300m WIDE RWS IN THE INTEREST OF SAFEGUARDING AT THIS STAGE. THE CHANGE TO A 280m WIDE RWS WILL BE IMPLEMENTED IN THE FUTURE AS PART OF A MANAGED PROCESS THAT INCORPORATES ALL OF THE REGULATORY IMPLICATIONS BEYOND THE DECLARING OF AIRSPACE.

LEGEND:

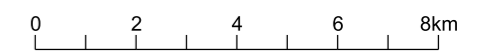
- OUTER HORIZONTAL SURFACE
- INNER HORIZONTAL SURFACE
- CONICAL SURFACE
- TAKE-OFF SURFACE
- APPROACH SURFACE
- TRANSITIONAL SURFACE

The surface construction shown in this document is in accordance with the standards defined in:

- ICAO Annex 14 - Aerodromes - Vol I - Aerodrome Design and Operations

Ray Romano
Ray Romano

Date: 20/02/23



SCALE 1:75,000 ON A1

REV	DATE	DESIGN	CHKD	APPR	AMENDMENT
2	17/04/23	JC	MC	JC	REVISED DESIGN STANDARD STAMP
1	20/02/23	JC	RR	JC	INITIAL RELEASE

Perth Airport
Level 2, 2 George Wlencke Drive
Perth Airport WA 6105
AUSTRALIA

CLIENT
PERTH AIRPORT PTY. LTD.

AIRPORT
PERTH INTERNATIONAL AIRPORT (YPPH)

PROJECT
2023 PRESCRIBED AIRSPACE

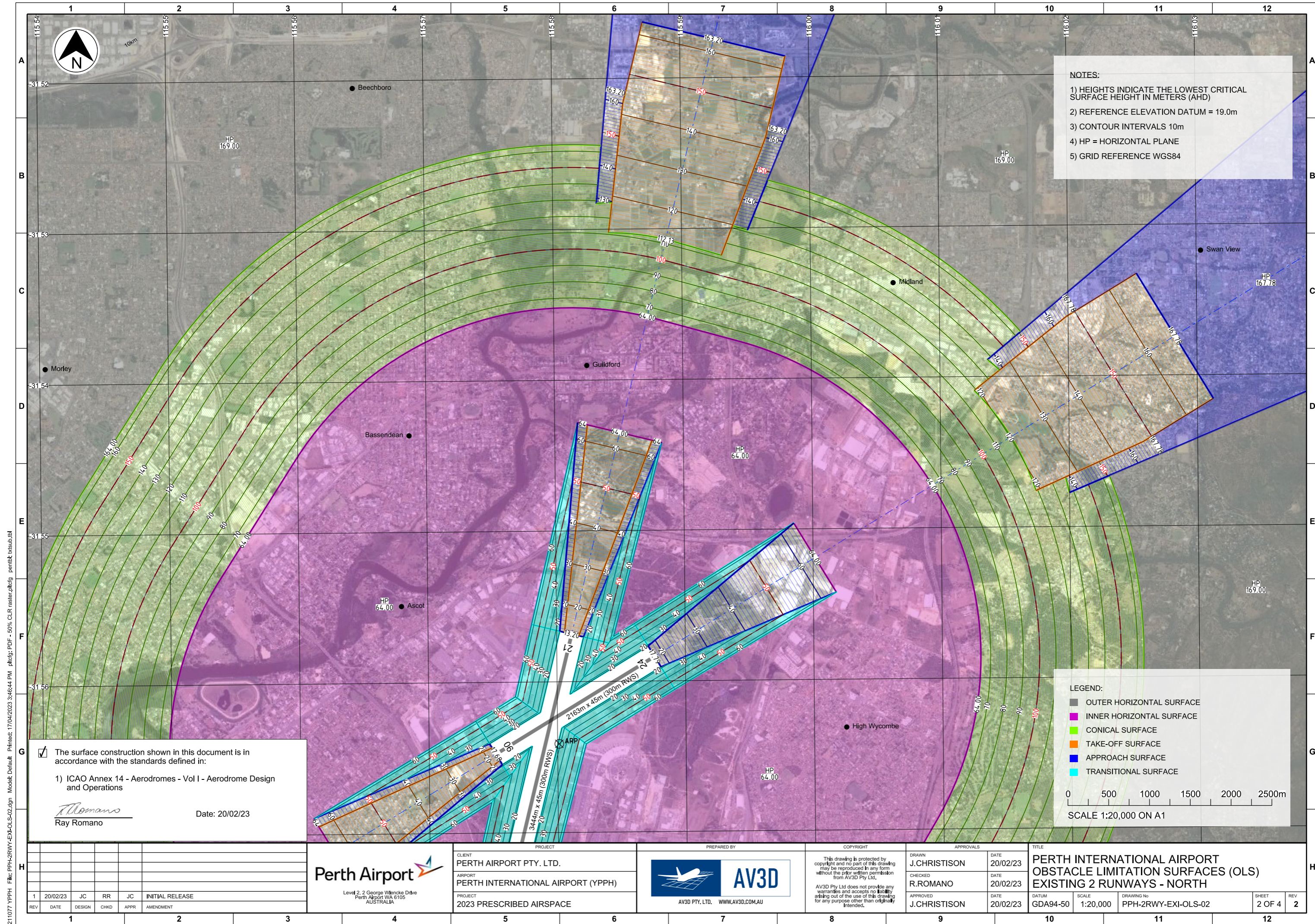
PREPARED BY

AV3D
AV3D PTY. LTD. WWW.AV3D.COM.AU

COPYRIGHT		APPROVALS	
This drawing is protected by copyright and no part of this drawing may be reproduced in any form without the prior written permission from AV3D Pty Ltd.		DRAWN	DATE
AV3D Pty Ltd does not provide any warranties and accepts no liability arising out of the use of this drawing for any purpose other than originally intended.		J.CHRISTISON	20/02/23
CHECKED	DATE	APPROVED	DATE
R.ROMANO	20/02/23	J.CHRISTISON	20/02/23

TITLE			
PERTH INTERNATIONAL AIRPORT OBSTACLE LIMITATION SURFACES (OLS) EXISTING 2 RUNWAYS			
DATUM	SCALE	DRAWING No	SHEET
GDA94-50	1:75,000	PPH-2RWY-EXI-OLS-01	1 OF 4
REV			
2			

211077 YPPH File: PPH-2RWY-EXI-OLS-01.dgn Model: Default Printed: 17/04/2023 3:56:47 PM Plot: PDF - 50% CLR raster, plot: penitib: xtab.tbl



NOTES:

- 1) HEIGHTS INDICATE THE LOWEST CRITICAL SURFACE HEIGHT IN METERS (AHD)
- 2) REFERENCE ELEVATION DATUM = 19.0m
- 3) CONTOUR INTERVALS 10m
- 4) HP = HORIZONTAL PLANE
- 5) GRID REFERENCE WGS84

LEGEND:

- OUTER HORIZONTAL SURFACE
- INNER HORIZONTAL SURFACE
- CONICAL SURFACE
- TAKE-OFF SURFACE
- APPROACH SURFACE
- TRANSITIONAL SURFACE

0 500 1000 1500 2000 2500m
SCALE 1:20,000 ON A1

The surface construction shown in this document is in accordance with the standards defined in:

- 1) ICAO Annex 14 - Aerodromes - Vol I - Aerodrome Design and Operations

Ray Romano
Ray Romano
Date: 20/02/23

211077 YPPH File: PPH-2RWY-EXI-OLS-02.dgn Model: Default Printed: 17/04/2023 3:46:44 PM pldlg: PDF - 50% CLR raster: pldlg pentit: xsub.tbl

REV	DATE	DESIGN	CHKD	APPR	AMENDMENT
1	20/02/23	JC	RR	JC	INITIAL RELEASE

Perth Airport
Level 2, 2 George Wlencke Drive
Perth Airport WA 6105
AUSTRALIA

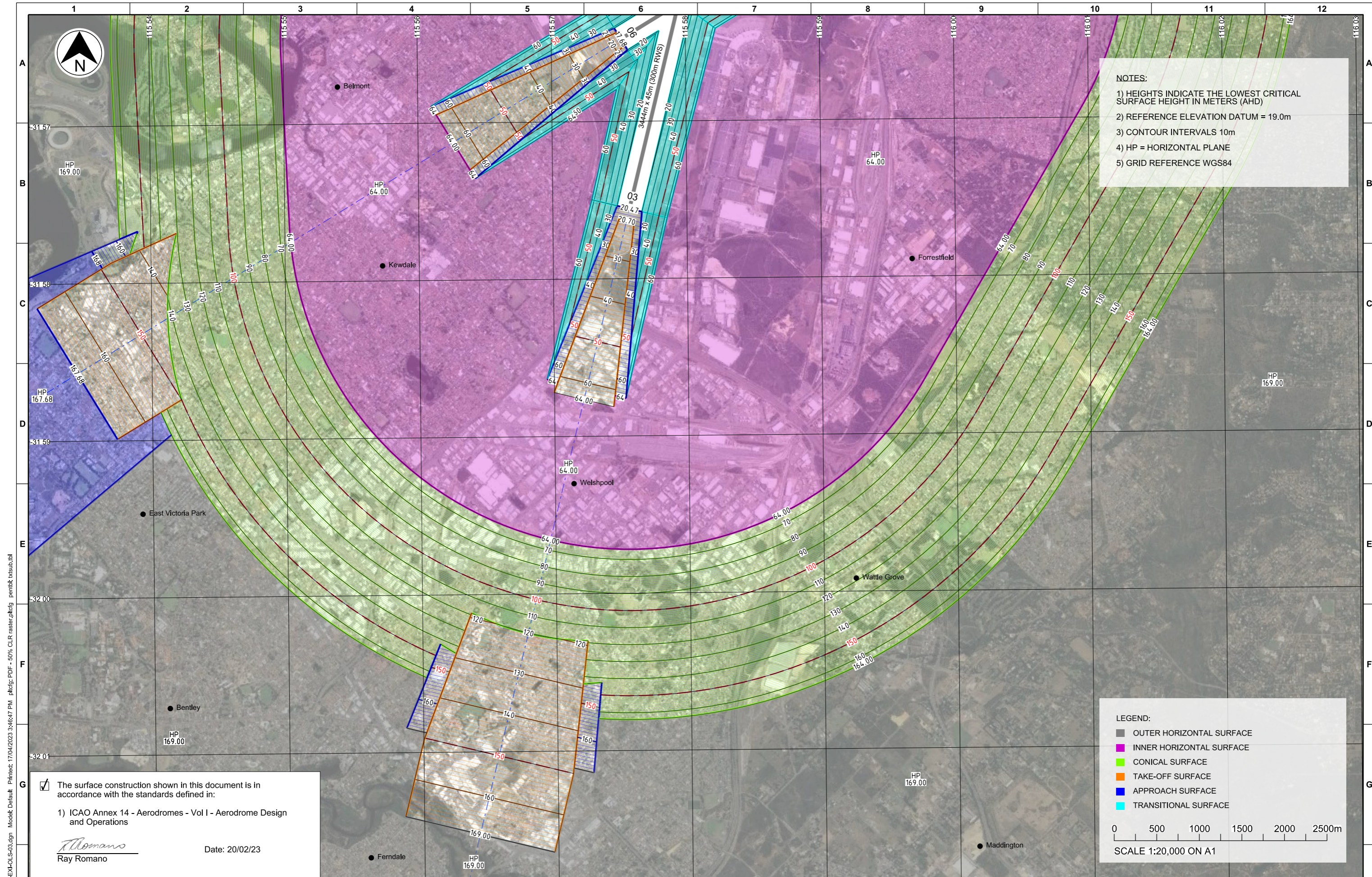
CLIENT
PERTH AIRPORT PTY. LTD.
AIRPORT
PERTH INTERNATIONAL AIRPORT (YPPH)
PROJECT
2023 PRESCRIBED AIRSPACE

PREPARED BY
AV3D
AV3D PTY. LTD. WWW.AV3D.COM.AU

COPYRIGHT
This drawing is protected by copyright and no part of this drawing may be reproduced in any form without the prior written permission from AV3D Pty Ltd.
AV3D Pty Ltd does not provide any warranties and accepts no liability arising out of the use of this drawing for any purpose other than originally intended.

DRAWN	CHECKED	APPROVED	DATE
J.CHRISTISON	R.ROMANO	J.CHRISTISON	20/02/23

TITLE	DATUM	SCALE	DRAWING No	SHEET	REV
PERTH INTERNATIONAL AIRPORT OBSTACLE LIMITATION SURFACES (OLS) EXISTING 2 RUNWAYS - NORTH	GDA94-50	1:20,000	PPH-2RWY-EXI-OLS-02	2 OF 4	2



The surface construction shown in this document is in accordance with the standards defined in:

1) ICAO Annex 14 - Aerodromes - Vol I - Aerodrome Design and Operations

Ray Romano
Ray Romano

Date: 20/02/23

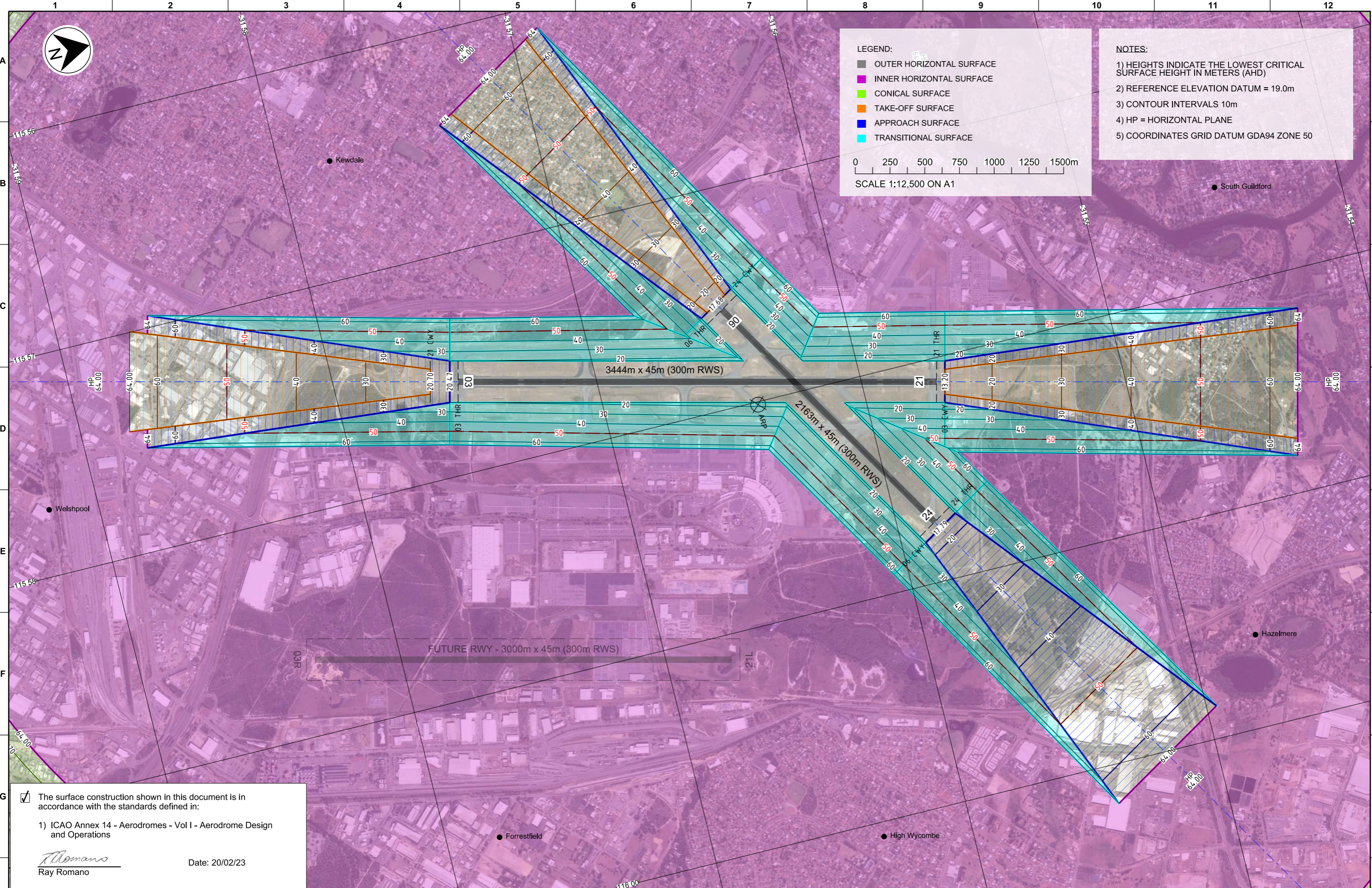
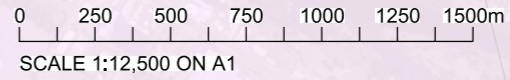
<p>Level 2, 2 George Wlencke Drive Perth Airport WA 6105 AUSTRALIA</p>				<p>CLIENT PERTH AIRPORT PTY. LTD.</p> <p>AIRPORT PERTH INTERNATIONAL AIRPORT (YPPH)</p> <p>PROJECT 2023 PRESCRIBED AIRSPACE</p>		<p>PREPARED BY</p> <p>AV3D PTY. LTD. WWW.AV3D.COM.AU</p>		<p>COPYRIGHT</p> <p>This drawing is protected by copyright and no part of this drawing may be reproduced in any form without the prior written permission from AV3D Pty Ltd.</p> <p>AV3D Pty Ltd does not provide any warranties and accepts no liability arising out of the use of this drawing for any purpose other than originally intended.</p>		<p>APPROVALS</p> <table border="1"> <tr> <td>DRAWN</td> <td>J. CHRISTISON</td> <td>DATE</td> <td>20/02/23</td> </tr> <tr> <td>CHECKED</td> <td>R. ROMANO</td> <td>DATE</td> <td>20/02/23</td> </tr> <tr> <td>APPROVED</td> <td>J. CHRISTISON</td> <td>DATE</td> <td>20/02/23</td> </tr> </table>		DRAWN	J. CHRISTISON	DATE	20/02/23	CHECKED	R. ROMANO	DATE	20/02/23	APPROVED	J. CHRISTISON	DATE	20/02/23	<p>TITLE</p> <p>PERTH INTERNATIONAL AIRPORT OBSTACLE LIMITATION SURFACES (OLS) EXISTING 2 RUNWAYS - SOUTH</p>					
DRAWN	J. CHRISTISON	DATE	20/02/23																										
CHECKED	R. ROMANO	DATE	20/02/23																										
APPROVED	J. CHRISTISON	DATE	20/02/23																										
<table border="1"> <tr> <th>REV</th> <th>DATE</th> <th>DESIGN</th> <th>CHKD</th> <th>APPR</th> <th>AMENDMENT</th> </tr> <tr> <td>2</td> <td>17/04/23</td> <td>JC</td> <td>MC</td> <td>JC</td> <td>REVISED DESIGN STANDARD STAMP</td> </tr> <tr> <td>1</td> <td>20/02/23</td> <td>JC</td> <td>RR</td> <td>JC</td> <td>INITIAL RELEASE</td> </tr> </table>		REV	DATE	DESIGN	CHKD	APPR	AMENDMENT	2	17/04/23	JC	MC	JC	REVISED DESIGN STANDARD STAMP	1	20/02/23	JC	RR	JC	INITIAL RELEASE	<p>DATUM</p> <p>GDA94-50</p>		<p>SCALE</p> <p>1:20,000</p>		<p>DRAWING No</p> <p>PPH-2RWY-EXI-OLS-03</p>		<p>SHEET</p> <p>3 OF 4</p>		<p>REV</p> <p>2</p>	
REV	DATE	DESIGN	CHKD	APPR	AMENDMENT																								
2	17/04/23	JC	MC	JC	REVISED DESIGN STANDARD STAMP																								
1	20/02/23	JC	RR	JC	INITIAL RELEASE																								

211077 YPPH File: PPH-2RWY-EXI-OLS-03.dgn Model: Default Printed: 17/04/2023 3:46:47 PM Plot: PDF - 50% CLR raster, plot: penit: xtab.tbl



- LEGEND:**
- OUTER HORIZONTAL SURFACE
 - INNER HORIZONTAL SURFACE
 - CONICAL SURFACE
 - TAKE-OFF SURFACE
 - APPROACH SURFACE
 - TRANSITIONAL SURFACE

- NOTES:**
- 1) HEIGHTS INDICATE THE LOWEST CRITICAL SURFACE HEIGHT IN METERS (AHD)
 - 2) REFERENCE ELEVATION DATUM = 19.0m
 - 3) CONTOUR INTERVALS 10m
 - 4) HP = HORIZONTAL PLANE
 - 5) COORDINATES GRID DATUM GDA94 ZONE 50



The surface construction shown in this document is in accordance with the standards defined in:

- 1) ICAO Annex 14 - Aerodromes - Vol I - Aerodrome Design and Operations

Ray Romano
Ray Romano

Date: 20/02/23

211077 YPPH File: PPH-2RWY-EXI-OLS-04.dgn Model: Default Printed: 17/04/2023 3:46:50 PM pldlg: PDF - 50% CLR raster: pldlg pentit: xtab.tbl

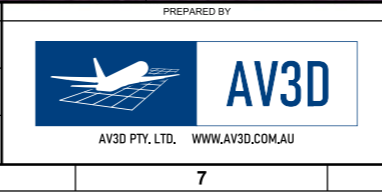
REV	DATE	DESIGN	CHKD	APPR	AMENDMENT
2	17/04/23	JC	MC	JC	REVISED DESIGN STANDARD STAMP
1	20/02/23	JC	RR	JC	INITIAL RELEASE



CLIENT
PERTH AIRPORT PTY. LTD.

AIRPORT
PERTH INTERNATIONAL AIRPORT (YPPH)

PROJECT
2023 PRESCRIBED AIRSPACE



COPYRIGHT
This drawing is protected by copyright and no part of this drawing may be reproduced in any form without the prior written permission from AV3D Pty Ltd.
AV3D Pty Ltd does not provide any warranties and accepts no liability arising out of the use of this drawing for any purpose other than originally intended.

APPROVALS		DATE
DRAWN	J. CHRISTISON	20/02/23
CHECKED	R. ROMANO	20/02/23
APPROVED	J. CHRISTISON	20/02/23

TITLE		DATUM	SCALE	DRAWING No	SHEET	REV
PERTH INTERNATIONAL AIRPORT OBSTACLE LIMITATION SURFACES (OLS) EXISTING 2 RUNWAYS - AIRPORT		GDA94-50	1:12,500	PPH-2RWY-EXI-OLS-04	4 OF 4	2